



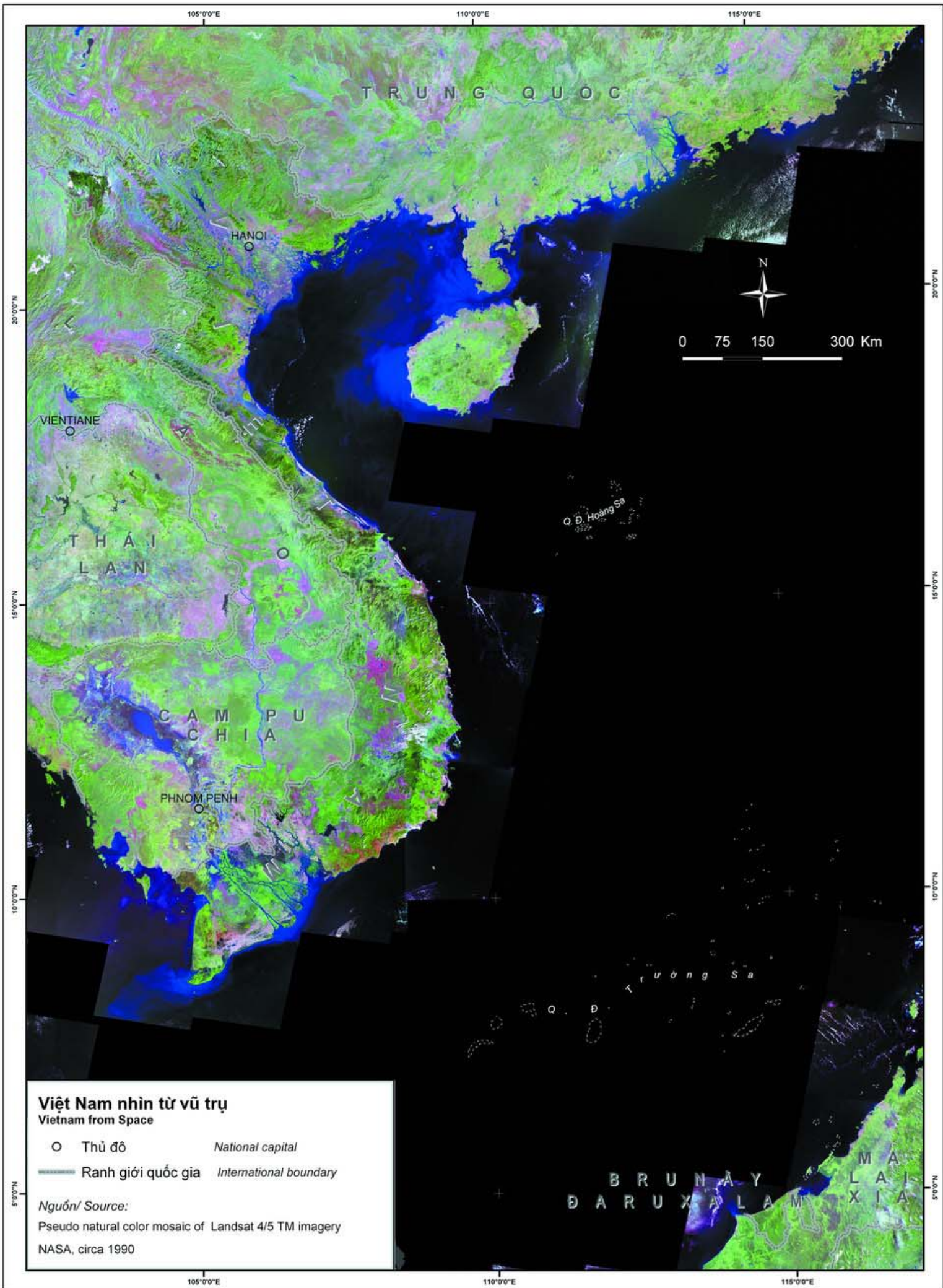
Agricultural Atlas of Viet Nam A Depiction of the 2001 Rural Agriculture and Fisheries Census

Introduction

Geographical Overview

This map consists of a series of photographs taken by the American National Aeronautics and Space Administration (NASA) Landsat Thematic Mapper (TM) 4 and Landsat TM5 satellites during the early 1990s. The map is included here to provide an overview of how Vietnam is situated within the peninsula of Southeast Asia. For illustrative purposes, the areas outside of Vietnam have been slightly faded, which is not to be confused with a difference in saturation of colours resulting from differences in land cover. Some land cover types typically associated with certain colours are listed as follows:

- dark green represents areas covered with thick, evergreen forest;
- light green represents areas covered with thin forests, brush plants and areas with low plant coverage;
- the bright green of the Mekong River delta shows rice cultivation areas that have not yet been harvested;
- brown, violet and red areas are those without plant coverage such as harvested rice fields, bare land and hills, farmland with low plant coverage, sand banks, bare rocky mountains, built up areas, etc.;
- dark blue represents the sea, rivers and deep lakes such as Dau Tieng Lake, Tri An Lake, Thac Ba Lake, Hoa Binh Lake etc;
- light blue areas represent shallow water (appearing whitish where alluvium from rivers enters the sea); and
- white areas, found mainly in Lai Chau and the Central Highlands, are due to cloud coverage at the time photographs were taken.



Việt Nam nhìn từ vũ trụ

Vietnam from Space

- Thủ đô *National capital*
- Ranh giới quốc gia *International boundary*

Nguồn/ Source:

Pseudo natural color mosaic of Landsat 4/5 TM imagery
 NASA, circa 1990