

LIVESTOCK SECTOR BRIEF

GHANA

Food and Agriculture Organization
of the United Nations • **FAO**

Livestock Information, Sector Analysis
and Policy Branch • **AGAL**



March 2005

TABLE OF CONTENTS

Preface	ii
1. General Information.....	1
Human population, land and socio-economics	1
Human population trends	2
Trends in agricultural land	2
2. Livestock Resources.....	2
Livestock populations	2
Contribution of different species to total livestock units	3
Selected indicators of livestock resources	3
Agro-ecological zones and densities of livestock species (2000)	4
3. Livestock Production	6
Trends in annual production of meat, milk and eggs	6
Composition of total meat production	6
Carcass weights and percentage slaughtered by species.....	7
Milk yields and proportion of dairy animals.....	7
Egg yields and proportion of laying birds.....	7
Estimated feed used for livestock production.....	8
Trends in annual per capita production of meat, milk and eggs.....	8
4. Consumption of Meat, Milk and Eggs	9
Trends in annual consumption of meat, milk and eggs	9
Trends in annual per capita consumption of meat, milk and eggs.....	9
Production versus consumption for meat, milk and eggs (2002)	10
5. Trade in Livestock and Livestock Products.....	11
Trade in agricultural and livestock products.....	11
Export/import 'dependency' for livestock products	11
Trade in live animals	12
Trade in livestock products	13
6. Livestock Health	14
Total number of cases/outbreaks of selected diseases reported in all susceptible species	14
7. References and Further Reading.....	15

Data contained in this Livestock Sector Brief are taken from official sources. Official sources are no guarantee for data accuracy and the figures reported in this brief should be taken as indicative and not be used for official purposes. The Food and Agriculture Organization of the United Nations assumes no responsibility for its accuracy, completeness and coherence.

PREFACE

The Livestock Sector Briefs (LSB) are intended to provide a quick overview and an approximate outlook for the livestock sector of the respective country using figures and quantitative indicators originating from official sources. The LSBs are complemented by a synthesis of policy documents available in the public domain.

The majority of the data in the LSBs refer to the country as a whole and come from FAOSTAT, which is available on the internet (<http://faostat.external.fao.org/default.jsp>). FAO, as part of its mandate, compiles information and data on various aspects of food and agriculture from all countries. The data are analysed and interpreted to support FAO's programmes and activities and, in accordance with the basic functions of the Organization, they are disseminated to the public through publications, CD-ROM, diskettes and the Internet. The country level data are officially submitted to the Division for Statistics of FAO (ESS) by various ministries of the respective countries. For details of data collection procedures see <http://faostat.fao.org/abcdq/about.htmx>. The figures submitted often display inconsistencies across ministries, for example reported meat production does not always match reported meat consumption when taking into account imports and exports. FAO tries to reconcile the figures, to the effect that FAO statistics may differ from those originally submitted.

The LSBs utilise FAOSTAT data from the following domains: human population, land use, agriculture production, food supply and agricultural and food trade. These are used to derive a standard set of indicators that can quickly be compared across the countries.

Data on the economy are from the World Bank's World Development Indicators CD-Rom, which is also available online <http://www.worldbank.org/data/> and is updated every year. Animal health data are taken from the Office International des Epizooties (OIE) HANDISTATUS II <http://www.oie.int/hs2/>. These are official data supplied by member nations.

For any feedback and comment, please contact:

Pius Chilonda - Livestock Information Analyst
Livestock Information, Sector Analysis and Policy Branch
Animal Production and Health Division
Food and Agricultural Organisation
Viale delle Terme di Caracalla
00100 Rome, Italy

Tel: 00 39 06 57056691
Fax: 00 39 06 57055749
Email: Pius.Chilonda@fao.org

1. GENERAL INFORMATION

Human population, land and socio-economics

Human population	20.5 million
Population density on total land	90.0 persons/sqkm
Annual growth rate (1990-2000)	2.4 %
Population in agriculture	11.4 million
As proportion of total population	55.7 %
Total land area	227,540 sqkm
Agricultural land	146,810 sqkm
As proportion of total land	64.5 %
Land under pasture	83,500 sqkm
As proportion of total land	56.9 %
Irrigated area	110 ha
Agricultural land per 100 people	72 ha
Agricultural land per 100 people in agriculture	129 ha
Agricultural population density on agricultural land	77.7 persons/sqkm
GDP ¹	8,687 million US\$
GDP annual growth rate (1990-2000)	4.3 %
GDP per capita/year ¹	429 US\$
GDP per capita annual growth rate (1990-2000)	1.9 %
Agriculture, GDP	3,313 million US\$
As proportion of total GDP	38.1 %
Livestock, GDP ¹	205 million US\$
As proportion of agricultural GDP	6.2 %
Human development Rank	131 Ranking ²
Human development index	0.568
Poverty incidence ³	
Total	39.5 %
Urban	18.6 %
Rural	49.9 %

¹Constant 1995 US\$ ²The HDI rank is determined using HDI values to the fifth decimal point – from 177 countries, as compiled by the UNDP; ³National poverty line; na: not available

Source: World Bank (2002); UNDP (2004); FAO (2005a)

Human population trends

Values expressed in 1,000

Population segment	Year				Annual growth rate (%)	
	1980	1990	2000	2002	1980-1990	1990-2000
Total	11,043	15,277	19,593	20,471	3.3	2.5
Rural	7,601	9,707	10,987	11,243	2.5	1.2
Urban	3,442	5,570	8,607	9,228	4.9	4.4

Source: FAO (2005a)

Trends in agricultural¹ land

Values expressed in sqkm

Land type	Year				Annual growth rate (%)	
	1980	1990	2000	2002	1980-1990	1990-2000
Total	120,000	126,050	144,500	146,810	0.5	1.4
Cropped ²	36,000	42,000	61,000	63,310	1.6	3.8
Pastures	84,000	84,050	83,500	83,500	0.0	-0.1

¹The sum of area under arable land, permanent crops and permanent pastures

²Arable and permanent crops

Source: FAO (2005a)

2. LIVESTOCK RESOURCES

Livestock populations

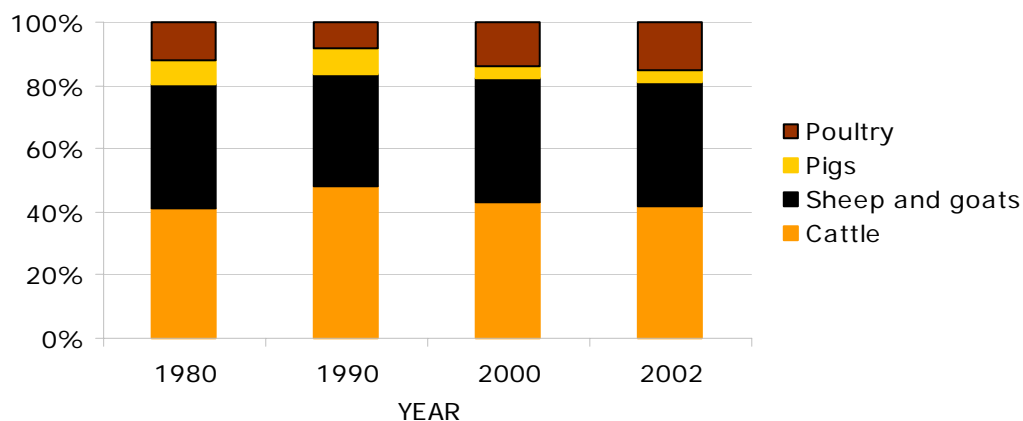
Values expressed in 1,000

Species	Year				Annual growth rate (%)	
	1980	1990	2000	2002	1980-1990	1990-2000
Cattle	804	1,145	1,302	1,330	3.6	1.3
Sheep and goats	3,875	4,242	5,820	6,152	0.9	3.2
Pigs	379	474	324	310	2.3	-3.7
Poultry	11,500	9,686	20,472	24,251	-1.7	7.8
Total LUs	980	1,188	1,503	1,585	1.9	2.4

LU: *Livestock unit*; **conversion factors:** cattle (0.50), sheep and goats (0.10), pigs (0.20) and poultry (0.01)

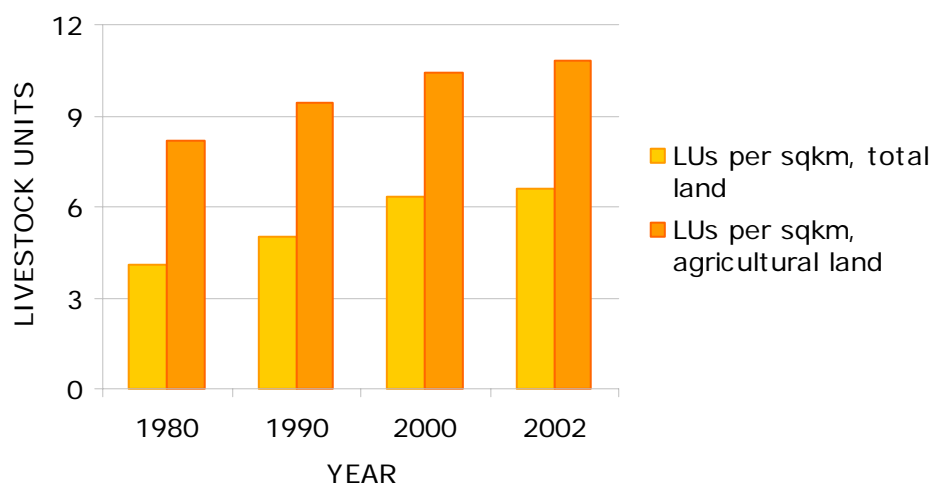
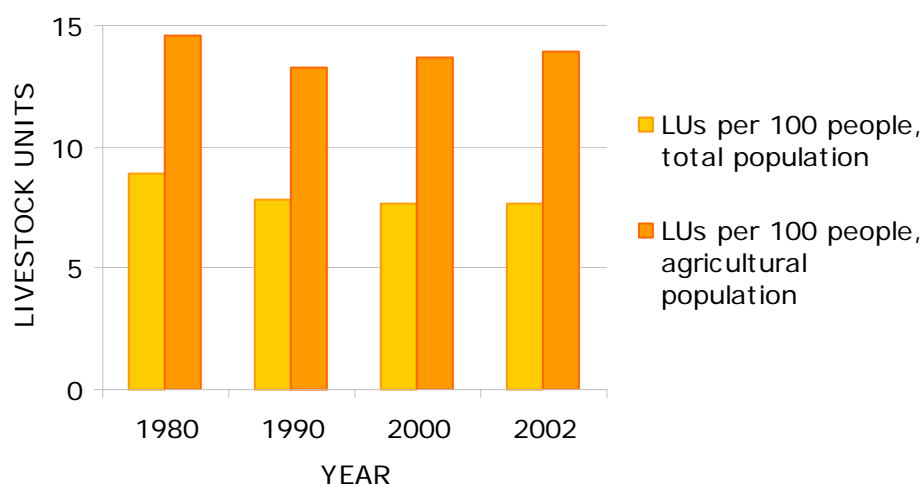
Source: FAO (2005a)

Contribution of different species to total livestock units



Source: FAO (2005a)

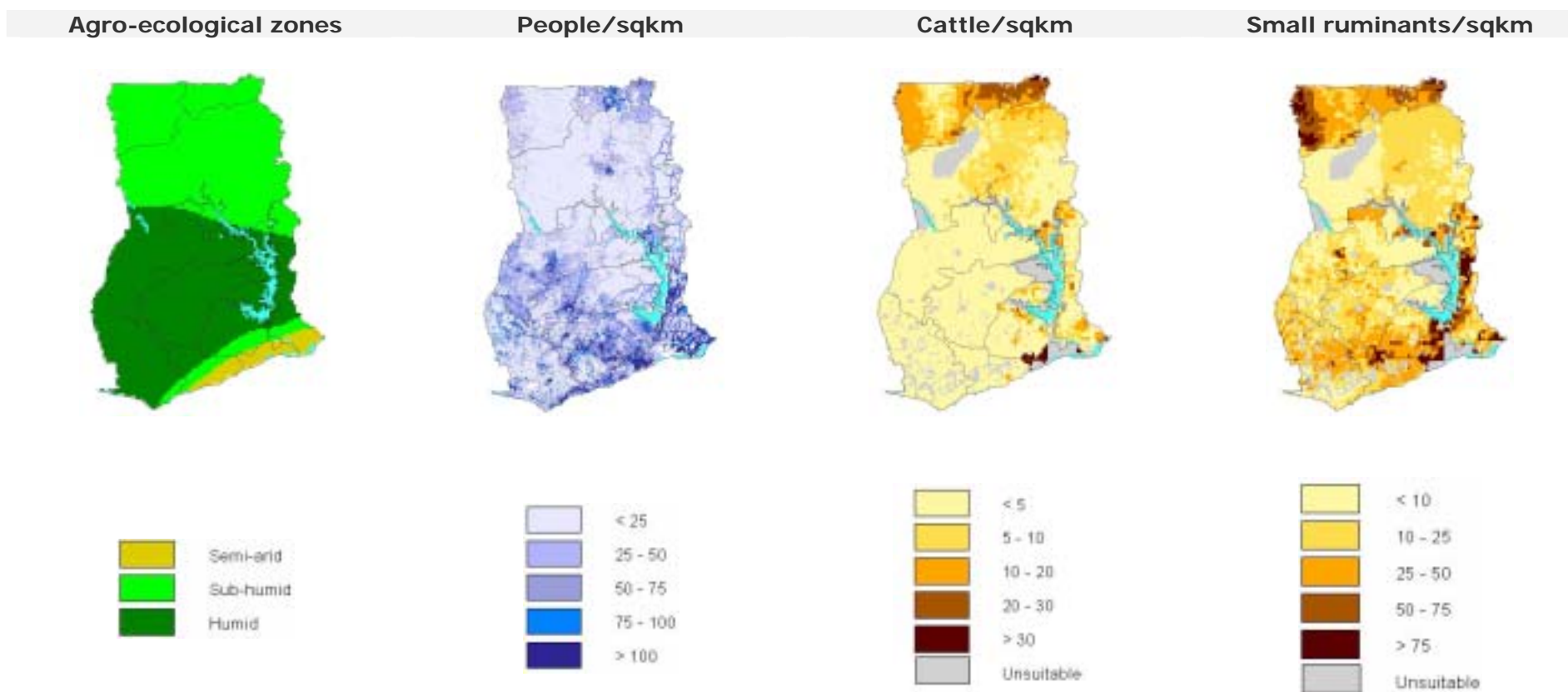
Selected indicators of livestock resources



Source: FAO (2005a)

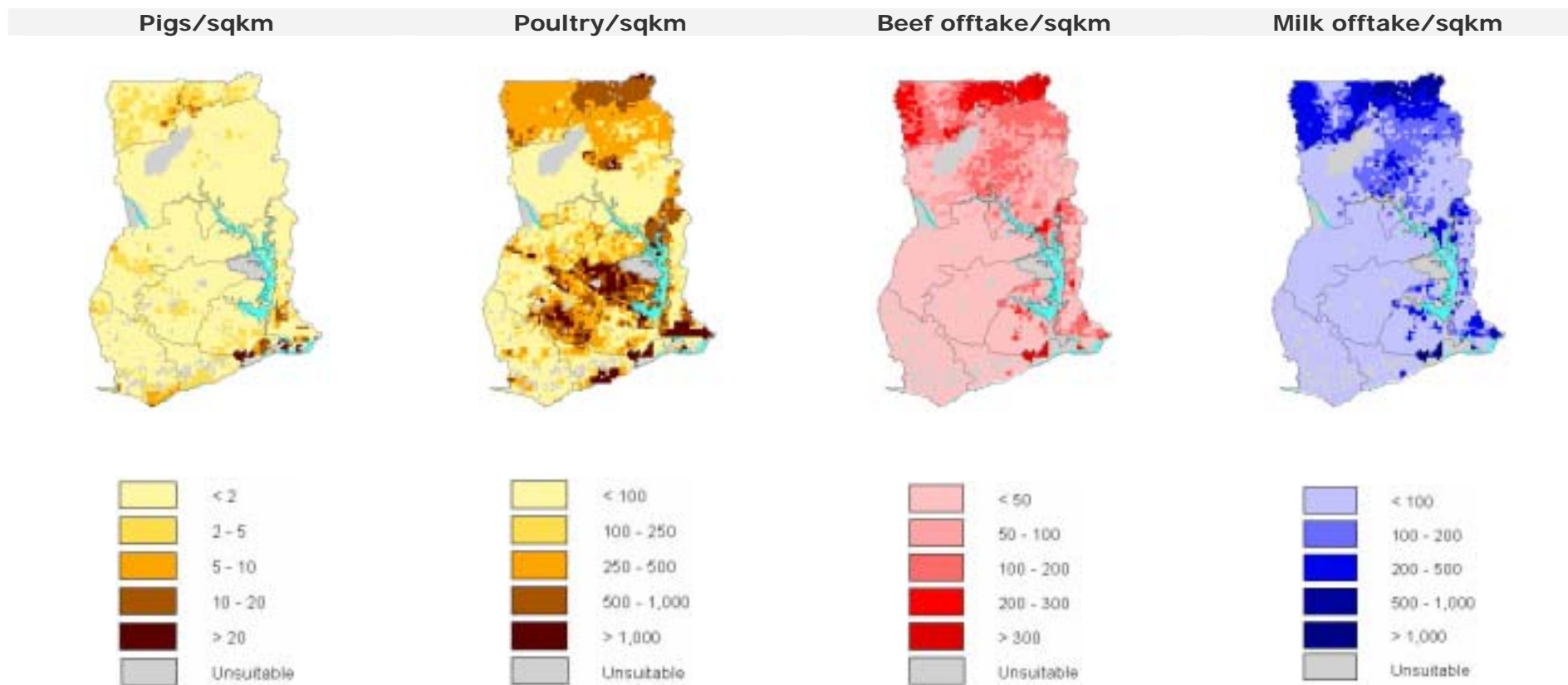
Agro-ecological zones and densities of livestock species (2000)

Density calculated on total land area¹



¹Densities for livestock populations and production are based on total land suitable for livestock production

Source: FAO (2001); LandScan (2002), FAO (2005b)



Source: FAO (2005b); FAO (2003)

3. LIVESTOCK PRODUCTION

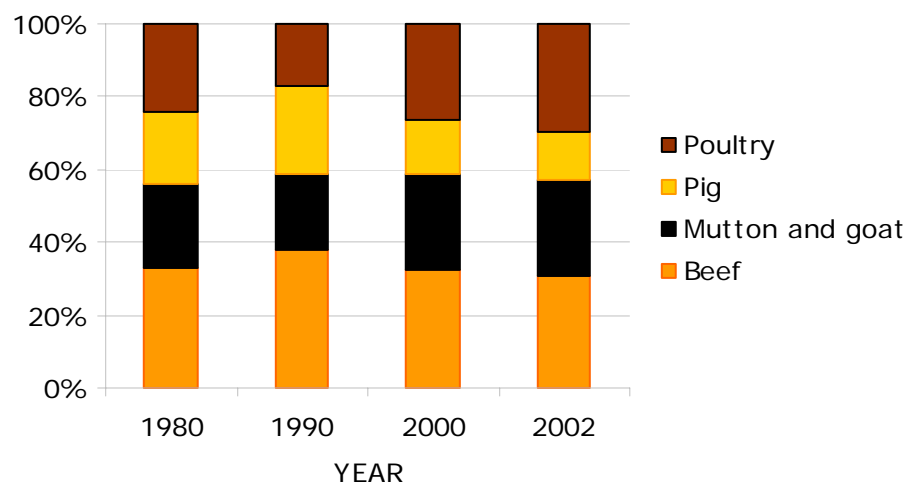
Trends in annual production of meat, milk and eggs

1,000 metric tonnes

Product	Year				Annual growth rate (%)	
	1980	1990	2000	2002	1980-1990	1990-2000
Meat, total	112.2	142.5	163.7	168.7	2.4	1.4
Beef	14.4	19.7	23.8	24.1	3.2	1.9
Mutton and goat	10.0	10.9	19.6	20.7	0.9	6.0
Pig	8.5	12.9	10.9	10.4	4.3	-1.7
Poultry	10.4	9.0	19.5	23.4	-1.5	8.0
Milk, total	15.6	20.8	33.8	34.6	2.9	5.0
Eggs, total	12.2	10.3	21.7	23.3	-1.6	7.7

Source: FAO (2005a)

Composition of total meat production



Source: FAO (2005a)

Carcass weights and percentage slaughtered by species

Species/year	Carcass weight (kg/animal)				Percentage slaughtered/year			
	1980	1990	2000	2002	1980	1990	2000	2002
Cattle	115.0	115.0	125.0	125.0	15.5	15.0	14.6	14.5
Sheep	11.0	11.0	15.0	15.0	25.2	25.0	23.0	23.0
Goat	9.5	9.5	13.2	13.2	24.8	25.0	25.0	25.0
Pigs	28.0	34.0	42.0	42.0	79.9	80.0	79.9	80.0
Poultry	0.9	0.9	1.0	1.0	100.9	103.2	97.7	99.0

Source: FAO (2005a)

Milk yields and proportion of dairy animals

Species/year	Milk yield (kg/year)				Percentage milked			
	1980	1990	2000	2002	1980	1990	2000	2002
Cattle	130	130	130	130	14.9	14.0	20.0	20.0

Source: FAO (2005a)

Egg yields and proportion of laying birds

Species/year	Eggs (kg/year)				Percentage laying			
	1980	1990	2000	2002	1980	1990	2000	2002
Chicken	2.6	2.6	2.6	2.6	40.0	40.3	40.1	36.3

Source: FAO (2005a)

Estimated feed used for livestock production

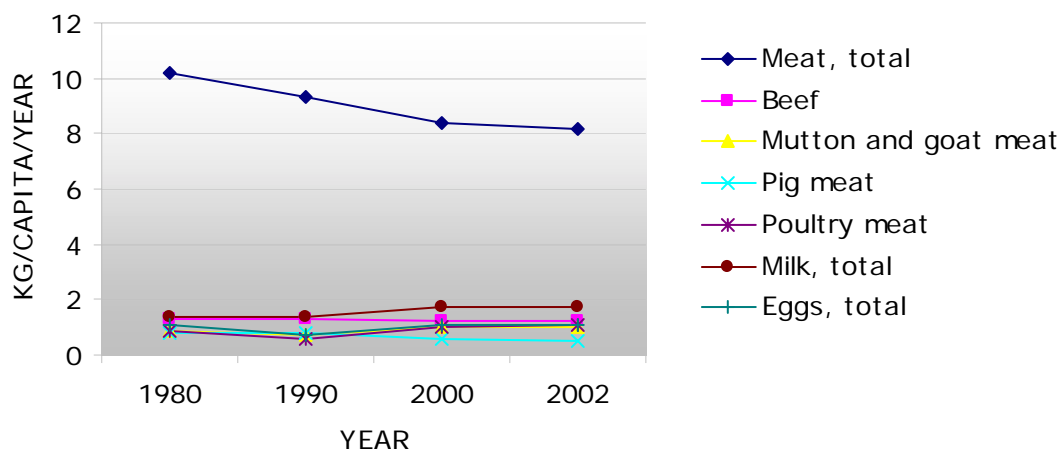
1,000 metric tonnes

Product	Year				Annual growth rate (%)	
	1980	1990	2000	2002	1980-1990	1990-2000
Maize	20.0	33.2	60.8	75.0	5.2	6.3
Barley						
Sorghum						
Millet						
Wheat						
Brans	76.3	110.1	169.7	145.2	3.7	4.4
Rice Paddy, equivalent						
Roots and Tuber, dry equivalent	0.0	0.0	366.2	617.1		
Pulses						
Oil crops	0.0	0.0	0.1	0.1		

Blanks represent no data

Source: FAO (2005a)

Trends in annual per capita production of meat, milk and eggs



Source: FAO (2005a)

4. CONSUMPTION OF MEAT, MILK AND EGGS

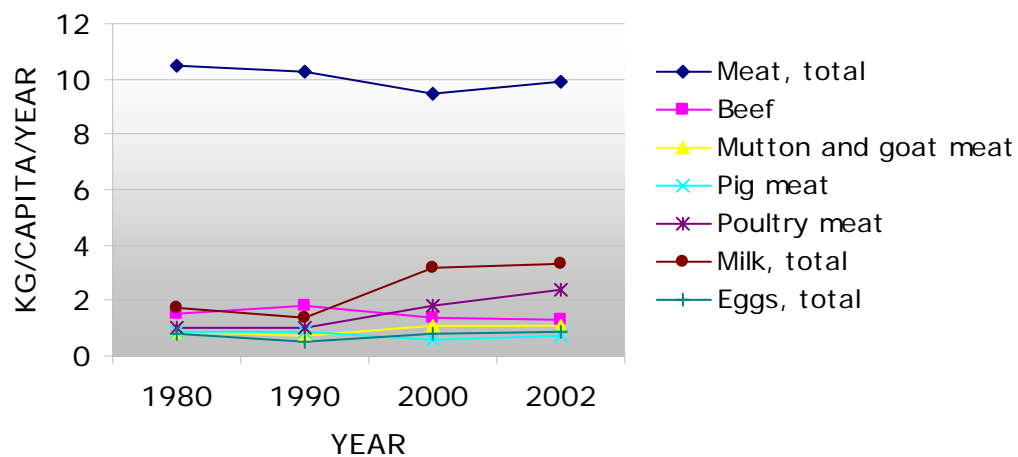
Trends in annual consumption of meat, milk and eggs

1,000 metric tonnes

Product	Year				Annual growth rate (%)	
	1980	1990	2000	2002	1980-1990	1990-2000
Meat, total	115.8	157.4	185.8	202.7	3.1	1.7
Beef	16.4	27.1	26.6	26.6	5.2	-0.2
Sheep and goat	10.0	10.9	20.9	22.0	0.9	6.7
Pig	9.9	13.4	12.6	13.8	3.1	-0.6
Poultry	10.6	16.0	35.4	49.9	4.2	8.3
Milk, total	19.1	21.0	63.3	67.5	0.9	11.7
Eggs, total	9.1	7.8	16.4	17.5	-1.5	7.7

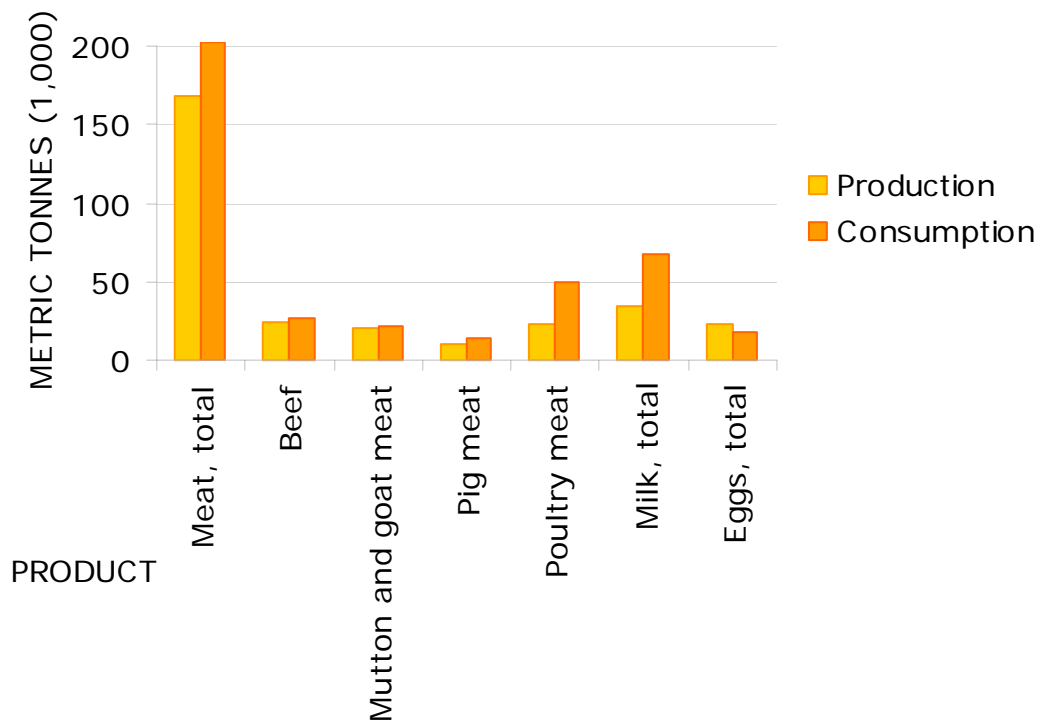
Source: FAO (2005a)

Trends in annual per capita consumption of meat, milk and eggs



Source: FAO (2005a)

Production versus consumption for meat, milk and eggs (2002)



Source: FAO (2005a)

5. TRADE IN LIVESTOCK AND LIVESTOCK PRODUCTS

Trade in agricultural and livestock¹ products

Values in million US\$

Product	Exports				Imports			
	1980	1990	2000	2002	1980	1990	2000	2002
Total	376	993	2,429	2,625	407	1,522	3,347	3,380
Agricultural	744	413	543	659	136	187	369	497
% agricultural		41.5	22.3	25.1	33.3	12.3	11.0	14.7
Livestock	0.0	0.0	1.2	0.5	16.0	27.0	95.5	111.8
% livestock	0.0	0.0	0.1	0.0	3.9	1.8	2.9	3.3

Blanks represent no data

¹Total trade in goods and services expressed in current US\$. Source: World Bank (2002)
Agricultural trade refers to all agricultural products, while livestock trade refers to trade in livestock products and live animals. Source: FAO (2005b)

Export/import 'dependency' for livestock products

Product	Exports as percentage of production				Imports as percentage of consumption			
	1980	1990	2000	2002	1980	1990	2000	2002
Meat, total	0.00	0.00	0.15	0.49	2.71	9.15	11.92	17.05
Beef	0.00	0.00	0.44	0.16	10.21	25.51	11.37	9.4
Sheep and goat	0.00	0.00	0.00	0.00	0.59	0.32	6.13	5.82
Pig	0.00	0.00	0.00	0.06	12.6	3.22	12.7	23.59
Poultry	0.00	0.00	0.7	3.34	1.55	43.75	45.3	54.69
Milk, equivalent	0.00	0.00	6.11	11.37	91.24	132.6	141.11	221.96
Eggs, total	0.00	0.00	0.00	0.00	0.01	1.40	1.03	0.43

Source: FAO (2005a)

Product	Net exports as percentage of production				Net imports as percentage of consumption			
	1980	1990	2000	2002	1980	1990	2000	2002
Meat, total	0.00	0.00	0.00	0.00	2.71	9.15	11.79	16.64
Beef	0.00	0.00	0.00	0.00	10.21	25.51	10.98	9.26
Sheep and goat	0.00	0.00	0.00	0.00	0.00	0.00	0.00	0.00
Pig	0.00	0.00	0.00	0.00	12.6	3.22	12.7	23.55
Poultry	0.00	0.00	0.00	0.00	1.55	43.75	44.91	53.12
Milk, equivalent	0.00	0.00	0.00	0.00	91.24	132.6	137.85	216.13
Eggs, total	0.00	0.00	0.00	0.00	0.01	1.40	1.03	0.43

Source: FAO (2005a)

Trade in live animals

Species	1980			1990			2000			2002		
	Export	Import	Net trade	Export	Import	Net trade	Export	Import	Net trade	Export	Import	Net trade
Quantities (count)												
Cattle	0	4,024	-4,024	0	362	-362	0	60,000	-60,000	36	60,000	-59,964
Sheep and goats	221	1,560	-1,339	0	361	-361	4	0	4	223	0	223
Pigs		0	0		0	0		70	-70		0	0
Poultry (1,000)	0	75	-75	0	320	-320	0	508	-508	14	1,016	-1,002
Value (1,000 US\$)												
Cattle	0	1,183	-1,183	0	300	-300	0	51,000	-51,000	4	51,000	-50,996
Sheep and goats	4	123	-119	0	49	-49	0	0	0	10	0	10
Pigs		0	0		0	0		54	-54		0	0
Poultry (1,000)	0	322	-322	0	420	-420	0	904	-904	0	1,615	-1,615
Total	4	1,628	-1,624	0	769	-769	1	51,959	-51,958	14	52,615	-52,601

Net trade: Exports less Imports

Blanks represent no data

Source: FAO (2005a)

Trade in livestock products

Product	1980			1990			2000			2002		
	Export	Import	Net trade	Export	Import	Net trade	Export	Import	Net trade	Export	Import	Net trade
Quantities (metric tonnes)												
Meat, total	0	3,142	-3,142	0	14,408	-14,408	245	22,143	-21,898	829	34,563	-33,734
Beef	0	1,671	-1,671	0	6,923	-6,923	105	3,027	-2,922	39	2,501	-2,462
Mutton and goat		59	-59		35	-35		1,282	-1,282		1,282	-1,282
Pig	0	1,241	-1,241	0	429	-429	0	1,602	-1,602	6	3,257	-3,251
Poultry	0	164	-164	0	7,000	-7,000	136	16,034	-15,898	782	27,295	-26,513
Other	0	7	-7	0	21	-21	4	198	-202	2	228	-229
Milk, equivalent	0	17,442	-17,442	0	27,843	-27,843	2,064	89,322	-87,259	3,932	149,721	-145,789
Eggs, total	0	1	-1	0	110	-110	0	169	-169	0	75	-75
Hides and skins	0	0	0	0	0	0	5	216	-211	1	180	-179
Value (1,000 US\$)												
Meat, total	0	8,001	-8,001	0	16,540	-16,540	217	17,911	-17,694	219	25,220	-25,001
Beef	0	5,488	-5,488	0	8,930	-8,930	135	2,823	-2,687	63	2,275	-2,212
Mutton and goat		249	-249		150	-150		1,451	-1,451		1,426	-1,426
Pig	0	1,727	-1,727	0	460	-460	0	1,426	-1,426	9	2,257	-2,248
Poultry	0	520	-520	0	7,000	-7,000	81	12,041	-11,960	147	19,007	-18,860
Other	0	17	-17	0	0	0	0	171	-171	0	255	-255
Milk, equivalent	0	6,353	-6,353	0	9,255	-9,255	742	24,494	-23,752	298	33,473	-33,175
Eggs, total	0	18	-18	0	420	-420	0	1,008	-1,008	0	372	-372
Hides and skins	0	0	0	0	0	0	6	125	-119	2	137	-135
Total	0	14,372	-14,372	0	26,215	-26,215	965	43,539	-42,574	519	59,202	-58,683

Net trade: Exports less Imports

Blanks represent no data

Source: FAO (2005a)

6. LIVESTOCK HEALTH

Total number of cases/outbreaks of selected diseases reported in all susceptible species

Disease	1997	1998	1999	2000	2001	2002	2003
African swine fever		000	.../25	927/4	(02/2000)	7262/...	2809/5
Avian Influenza ¹		000		-	-	-	-
Bluetongue		000		-	-	-	-
BSE ²				-	-	-	-
CBPP ³	233/50	.../37	106/20	51/22	211/7	181/19	113/18
Classical swine fever		000		-	-	-	-
Foot and mouth disease	6,852/33	5,000/60	803/22	1,453/25	173/3	99/12	378/4
Lumpy skin disease	4/1	280/21	221/25	(1999)	45/6	63/1	224/11
Newcastle disease	45,905/183	226,000/173	88,886/331	72,580/303	35,925/68	36,043/12	14,041/170
Peste des petits ruminants	1,993/93	1,108/73	1,101/38	762/60	2,423/76	955/27	254/22
Rift Valley fever		000		-	-	-	-
Rinderpest	(08/1988)	(08/1988)		(08/1988)	(08/1988)	(08/1988)	(08/1988)
Sheep and goat pox		000		-	-	-	-
Swine vesicular disease		000		-	-	-	-
Vesicular stomatitis		000		-	-	-	-

¹ Highly pathogenic avian influenza

² Bovine spongiform encephalopathy

³ Contagious bovine pleuropneumonia

no./no. number of cases/outbreaks, ... no information, - disease not reported, 000 disease never reported; (month/year) date of the last reported occurrence of the disease in previous years

Source: OIE (2004)

7. REFERENCES AND FURTHER READING

FAO (2001) Agro-ecological Distributions for Africa, Asia and North and Central America, Consultants' Report. Food and Agriculture Organisation, Rome.

FAO (2003) Cattle and small ruminant production systems in sub-Saharan Africa: a systematic review. Food and Agriculture Organisation, Rome.

FAO (2005a) FAOSTAT data. Food and Agriculture Organisation, Rome.
<http://faostat.external.fao.org/default.jsp> (accessed March, 2005).

FAO (2005b) Global Livestock Production and Health Atlas. Food and Agriculture Organisation, Rome. <http://www.fao.org/ag/aga/glipha/index.jsp> (accessed March, 2005).

LandScan (2002) Global Population Database. Oak Ridge National Laboratory, Oakridge. <http://www.ornl.gov/gist/>

OIE (2004) HANDISTATUS II. Office International des Epizooties, Paris.
<http://www.oie.int/hs2/> (accessed March, 2005).

UNDP (2004). The Human development Reports, United Nations Development Programme, New York. <http://hdr.undp.org/statistics/>

World Bank (2002) The 2002 World Bank development indicators CD-Rom. The World Bank, Washington DC.