

# GUINEA BISSAU

Food and Agriculture Organization  
of the United Nations • **FAO**

Livestock Information, Sector Analysis  
and Policy Branch • **AGAL**



March 2005

## TABLE OF CONTENTS

Preface .....	ii
<b>1. General Information.....</b>	<b>1</b>
Human population, land and socio-economics .....	1
Human population trends .....	2
Trends in agricultural land .....	2
<b>2. Livestock Resources.....</b>	<b>2</b>
Livestock populations .....	2
Contribution of different species to total livestock units .....	3
Selected indicators of livestock resources .....	3
Agro-ecological zones and densities of livestock species (2000) .....	4
<b>3. Livestock Production .....</b>	<b>6</b>
Trends in annual production of meat, milk and eggs .....	6
Composition of total meat production .....	6
Carcass weights and percentage slaughtered by species.....	7
Milk yields and proportion of dairy animals.....	7
Egg yields and proportion of laying birds.....	7
Estimated feed used for livestock production.....	8
Trends in annual per capita production of meat, milk and eggs.....	8
<b>4. Consumption of Meat, Milk and Eggs .....</b>	<b>9</b>
Trends in annual consumption of meat, milk and eggs .....	9
Trends in annual per capita consumption of meat, milk and eggs.....	9
Production versus consumption for meat, milk and eggs (2002) .....	10
<b>5. Trade in Livestock and Livestock Products.....</b>	<b>11</b>
Trade in agricultural and livestock products.....	11
Export/import 'dependency' for livestock products .....	11
Trade in live animals .....	12
Trade in livestock products .....	13
<b>6. Livestock Health .....</b>	<b>14</b>
Total number of cases/outbreaks of selected diseases reported in all susceptible species .....	14
<b>7. References and Further Reading.....</b>	<b>15</b>

Data contained in this Livestock Sector Brief are taken from official sources. Official sources are no guarantee for data accuracy and the figures reported in this brief should be taken as indicative and not be used for official purposes. The Food and Agriculture Organization of the United Nations assumes no responsibility for its accuracy, completeness and coherence.

## PREFACE

The Livestock Sector Briefs (LSB) are intended to provide a quick overview and an approximate outlook for the livestock sector of the respective country using figures and quantitative indicators originating from official sources. The LSBs are complemented by a synthesis of policy documents available in the public domain.

The majority of the data in the LSBs refer to the country as a whole and come from FAOSTAT, which is available on the internet (<http://faostat.external.fao.org/default.jsp>). FAO, as part of its mandate, compiles information and data on various aspects of food and agriculture from all countries. The data are analysed and interpreted to support FAO's programmes and activities and, in accordance with the basic functions of the Organization, they are disseminated to the public through publications, CD-ROM, diskettes and the Internet. The country level data are officially submitted to the Division for Statistics of FAO (ESS) by various ministries of the respective countries. For details of data collection procedures see <http://faostat.fao.org/abcdq/about.htm>. The figures submitted often display inconsistencies across ministries, for example reported meat production does not always match reported meat consumption when taking into account imports and exports. FAO tries to reconcile the figures, to the effect that FAO statistics may differ from those originally submitted.

The LSBs utilise FAOSTAT data from the following domains: human population, land use, agriculture production, food supply and agricultural and food trade. These are used to derive a standard set of indicators that can quickly be compared across the countries.

Data on the economy are from the World Bank's World Development Indicators CD-Rom, which is also available online <http://www.worldbank.org/data/> and is updated every year. Animal health data are taken from the Office International des Epizooties (OIE) HANDISTATUS II <http://www.oie.int/hs2/>. These are official data supplied by member nations.

For any feedback and comment, please contact:

Pius Chilonda - Livestock Information Analyst  
Livestock Information, Sector Analysis and Policy Branch  
Animal Production and Health Division  
Food and Agricultural Organisation  
Viale delle Terme di Caracalla  
00100 Rome, Italy

Tel: 00 39 06 57056691  
Fax: 00 39 06 57055749  
Email: Pius.Chilonda@fao.org

## 1. GENERAL INFORMATION

### Human population, land and socio-economics

Human population	1.4 million
Population density on total land	51.5 persons/sqkm
Annual growth rate (1990-2000)	3.0 %
Population in agriculture	1.2 million
As proportion of total population	82.3 %
Total land area	28,120 sqkm
Agricultural land	16,280 sqkm
As proportion of total land	57.9 %
Land under pasture	10,800 sqkm
As proportion of total land	66.3 %
Irrigated area	170 ha
Agricultural land per 100 people	112 ha
Agricultural land per 100 people in agriculture	136 ha
Agricultural population density on agricultural land	73.3 persons/sqkm
GDP <sup>1</sup>	234 million US\$
GDP annual growth rate (1990-2000)	0.1 %
GDP per capita/year <sup>1</sup>	162 US\$
GDP per capita annual growth rate (1990-2000)	-2.7 %
Agriculture, GDP	143 million US\$
As proportion of total GDP	61.2 %
Livestock, GDP <sup>1</sup>	28 million US\$
As proportion of agricultural GDP	19.7 %
Human development Rank	172 Ranking <sup>2</sup>
Human development index	0.35
Poverty incidence <sup>3</sup>	
Total	na %
Urban	na %
Rural	na %

<sup>1</sup>Constant 1995 US\$ <sup>2</sup>The HDI rank is determined using HDI values to the fifth decimal point – from 177 countries, as compiled by the UNDP; <sup>3</sup>National poverty line; na: not available

Source: World Bank (2002); UNDP (2004); FAO (2005a)

## Human population trends

Values expressed in 1,000

Population segment	Year				Annual growth rate (%)	
	1980	1990	2000	2002	1980-1990	1990-2000
Total	793	1,016	1,367	1,449	2.5	3.0
Rural	656	775	936	969	1.7	1.9
Urban	137	241	431	480	5.8	6.0

Source: FAO (2005a)

## Trends in agricultural<sup>1</sup> land

Values expressed in sqkm

Land type	Year				Annual growth rate (%)	
	1980	1990	2000	2002	1980-1990	1990-2000
Total	13,830	14,970	16,280	16,280	0.8	0.8
Cropped <sup>2</sup>	3,030	4,170	5,480	5,480	3.2	2.8
Pastures	10,800	10,800	10,800	10,800	0.0	0.0

<sup>1</sup>The sum of area under arable land, permanent crops and permanent pastures

<sup>2</sup>Arable and permanent crops

Source: FAO (2005a)

## 2. LIVESTOCK RESOURCES

### Livestock populations

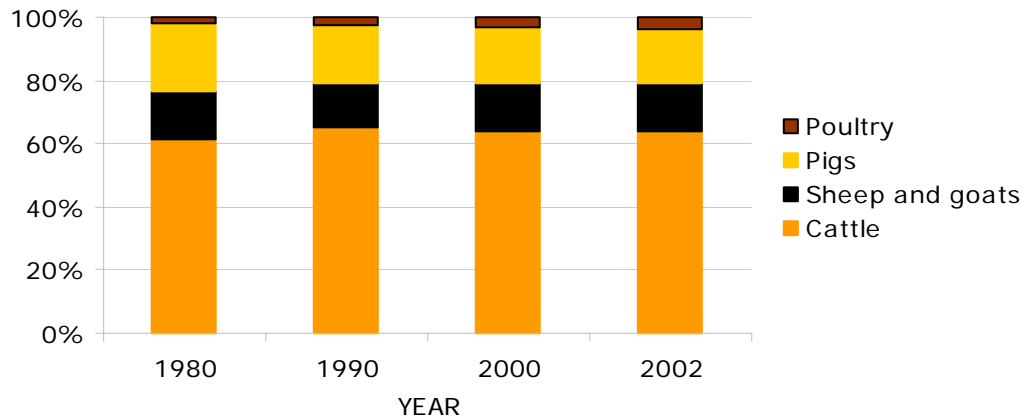
Values expressed in 1,000

Species	Year				Annual growth rate (%)	
	1980	1990	2000	2002	1980-1990	1990-2000
Cattle	290	410	512	515	3.5	2.2
Sheep and goats	361	450	605	610	2.2	3.0
Pigs	256	290	345	350	1.3	1.8
Poultry	420	800	1,300	1,500	6.7	5.0
Total LUs	236	316	399	404	2.9	2.3

**LU:** *Livestock unit*; **conversion factors:** cattle (0.50), sheep and goats (0.10), pigs (0.20) and poultry (0.01)

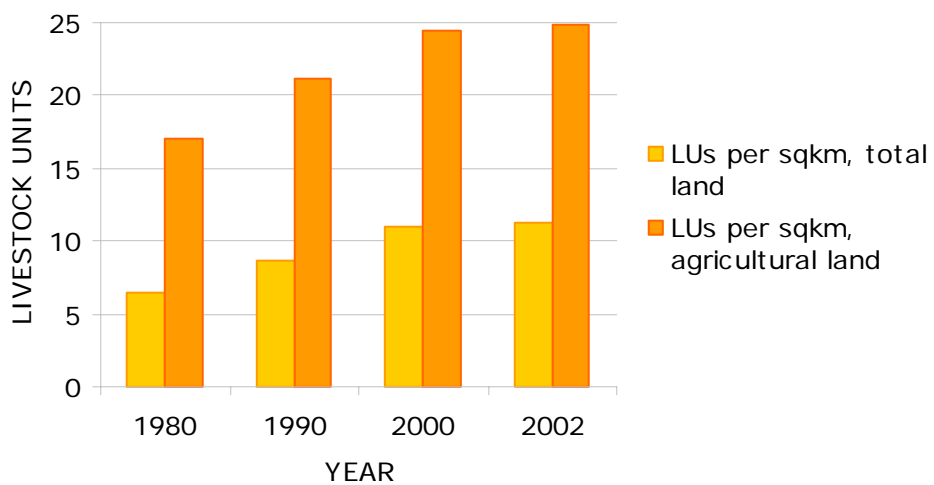
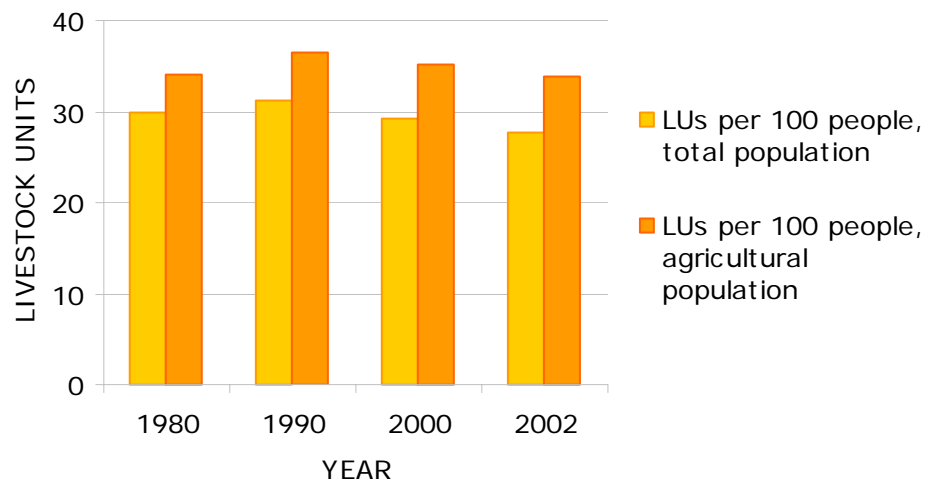
Source: FAO (2005a)

## Contribution of different species to total livestock units



Source: FAO (2005a)

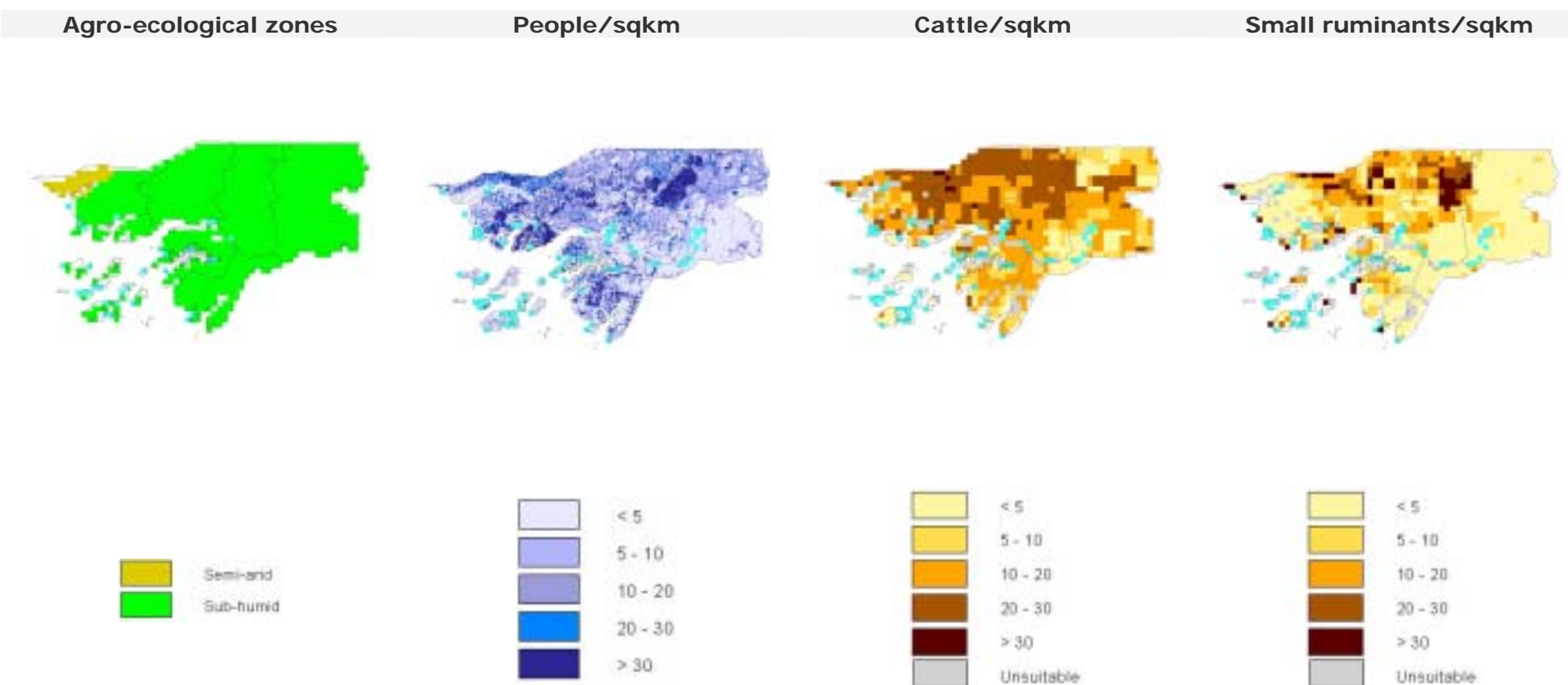
## Selected indicators of livestock resources



Source: FAO (2005a)

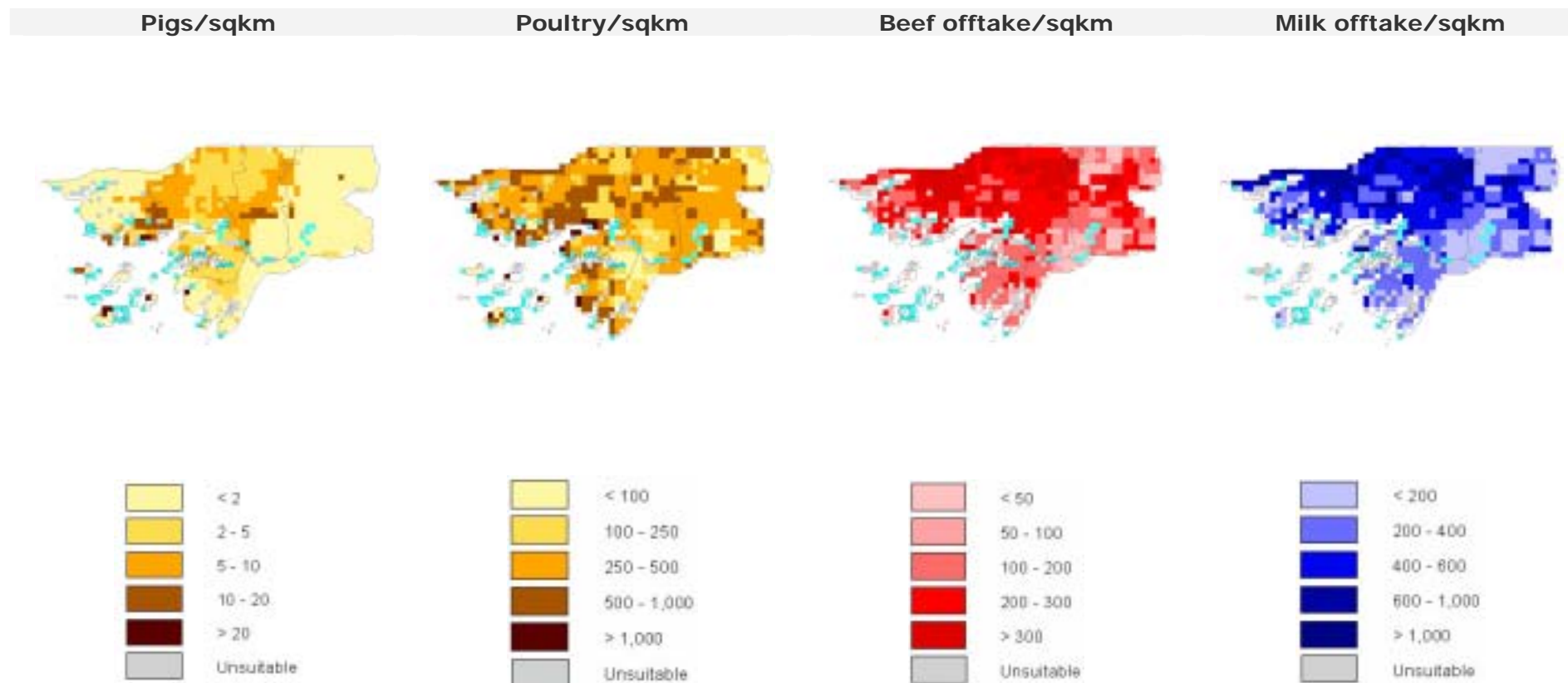
## Agro-ecological zones and densities of livestock species (2000)

Density calculated on total land area<sup>1</sup>



<sup>1</sup>Densities for livestock populations and production are based on total land suitable for livestock production

Source: FAO (2001); LandScan (2002), FAO (2005b)



Source: FAO (2005b); FAO (2003)

### 3. LIVESTOCK PRODUCTION

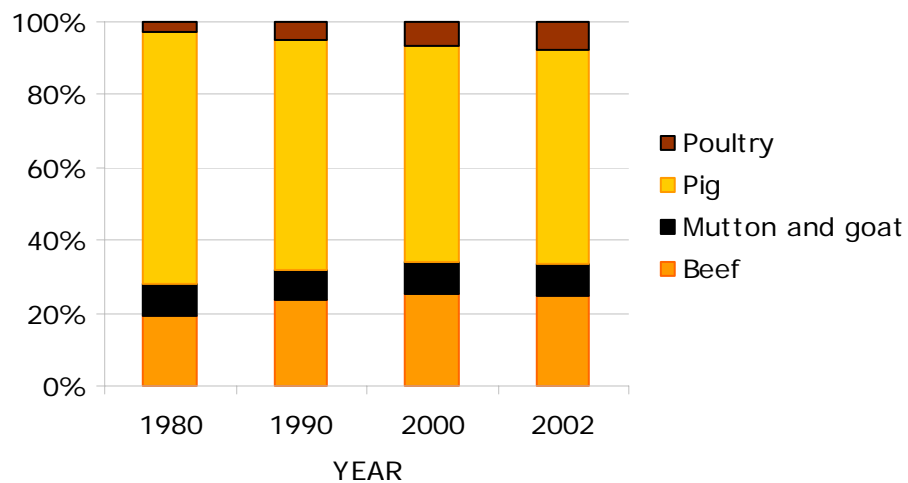
#### Trends in annual production of meat, milk and eggs

1,000 metric tonnes

Product	Year				Annual growth rate (%)	
	1980	1990	2000	2002	1980-1990	1990-2000
Meat, total	11.3	14.1	17.9	18.3	2.2	2.5
Beef	2.2	3.3	4.5	4.5	4.1	3.2
Mutton and goat	0.9	1.2	1.6	1.6	2.1	3.2
Pig	7.8	8.9	10.6	10.8	1.3	1.8
Poultry	0.3	0.7	1.2	1.4	7.9	5.7
Milk, total	11.5	15.7	17.6	17.6	3.2	1.2
Eggs, total	0.3	0.6	1.0	1.1	6.7	5.8

Source: FAO (2005a)

#### Composition of total meat production



Source: FAO (2005a)

### Carcass weights and percentage slaughtered by species

Species/year	Carcass weight (kg/animal)				Percentage slaughtered/year			
	1980	1990	2000	2002	1980	1990	2000	2002
Cattle	110.0	110.0	110.0	110.0	6.9	7.3	8.0	8.0
Sheep	10.0	10.0	10.0	10.0	25.3	24.8	25.7	25.3
Goat	9.0	9.0	9.0	9.0	30.1	30.0	30.0	30.0
Pigs	40.0	40.0	40.0	40.0	76.6	76.9	77.1	77.1
Poultry	0.7	0.7	0.7	0.7	108.8	122.5	130.8	130.0

Source: FAO (2005a)

### Milk yields and proportion of dairy animals

Species/year	Milk yield (kg/year)				Percentage milked			
	1980	1990	2000	2002	1980	1990	2000	2002
Cattle	170	170	170	170	17.2	17.3	15.2	15.1

Source: FAO (2005a)

### Egg yields and proportion of laying birds

Species/year	Eggs (kg/year)				Percentage laying			
	1980	1990	2000	2002	1980	1990	2000	2002
Chicken	2.4	2.4	2.4	2.4	30.0	30.0	32.3	31.3

Source: FAO (2005a)

## Estimated feed used for livestock production

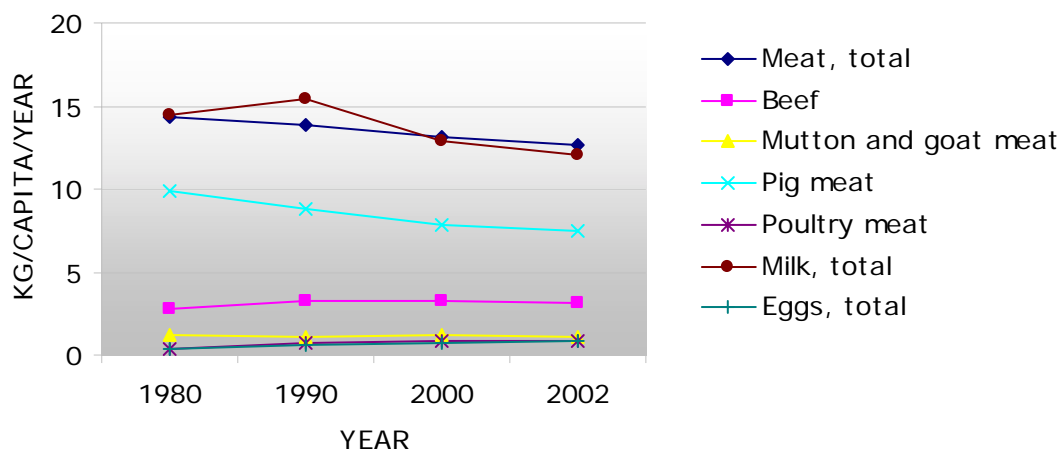
1,000 metric tonnes

Product	Year				Annual growth rate (%)	
	1980	1990	2000	2002	1980-1990	1990-2000
Maize	0.0	1.5	1.0	1.0		-4.0
Barley						
Sorghum						
Millet	0.0	2.0	5.0	5.0		9.6
Wheat						
Brans	8.3	12.7	13.5	11.1	4.3	0.6
Rice Paddy, equivalent	0.0	17.9	3.7	7.5		-14.5
Roots and Tuber, dry equivalent						
Pulses						
Oil crops						

Blanks represent no data

Source: FAO (2005a)

## Trends in annual per capita production of meat, milk and eggs



Source: FAO (2005a)

## 4. CONSUMPTION OF MEAT, MILK AND EGGS

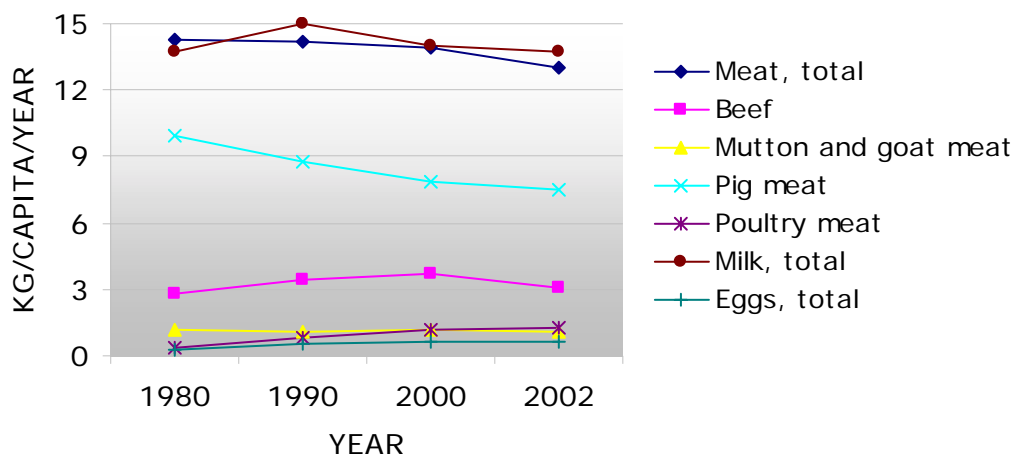
### Trends in annual consumption of meat, milk and eggs

1,000 metric tonnes

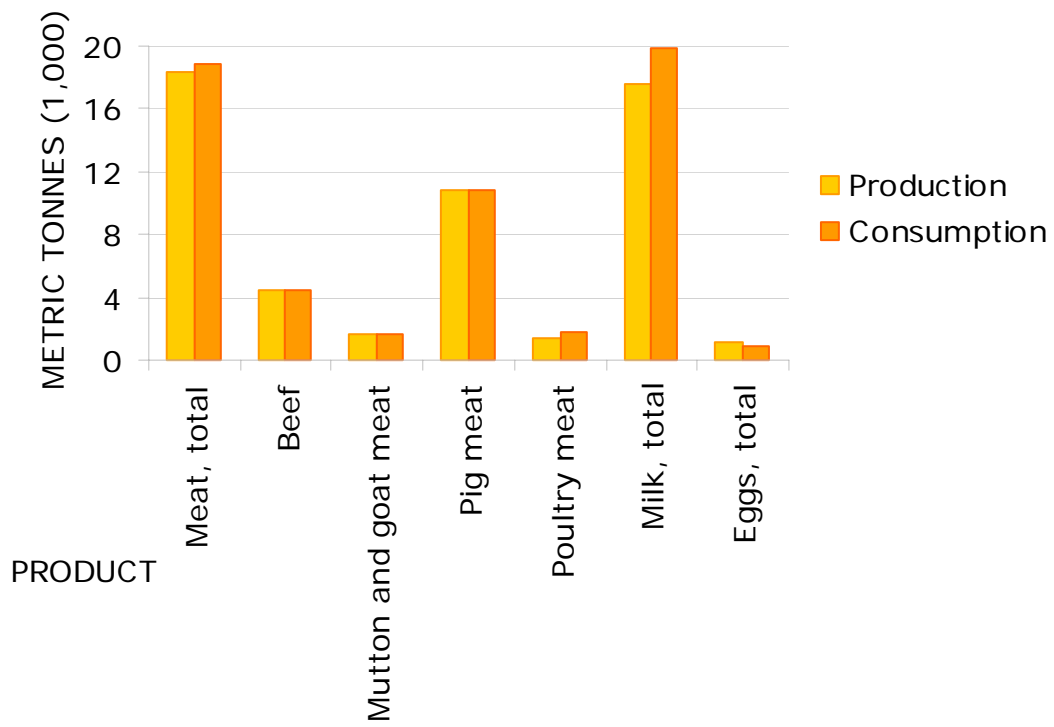
Product	Year				Annual growth rate (%)	
	1980	1990	2000	2002	1980-1990	1990-2000
Meat, total	11.4	14.4	19.0	18.8	2.4	2.8
Beef	2.2	3.5	5.1	4.5	4.6	3.7
Sheep and goat	0.9	1.2	1.6	1.6	2.1	3.2
Pig	7.9	9.0	10.7	10.8	1.3	1.8
Poultry	0.3	0.8	1.6	1.8	9.1	7.8
Milk, total	10.9	15.3	19.1	19.9	3.4	2.3
Eggs, total	0.2	0.5	0.8	0.9	6.6	5.8

Source: FAO (2005a)

### Trends in annual per capita consumption of meat, milk and eggs



Source: FAO (2005a)

**Production versus consumption for meat, milk and eggs (2002)**

Source: FAO (2005a)

## 5. TRADE IN LIVESTOCK AND LIVESTOCK PRODUCTS

### Trade in agricultural and livestock<sup>1</sup> products

Values in million US\$

Product	Exports				Imports			
	1980	1990	2000	2002	1980	1990	2000	2002
Total	14.0	24.2	68.5	92.3	46.3	90.4	125.5	157.5
Agricultural	5.7	13.3	71.8	47.7	12.2	23.4	43.1	41.3
% agricultural	40.7	54.9	104.8	51.7	26.3	25.9	34.3	26.2
Livestock	0.1	0.1	0.0	0.0	0.9	2.0	2.8	1.8
% livestock	0.4	0.3	0.0	0.0	2.0	2.2	2.2	1.1

<sup>1</sup>Total trade in goods and services expressed in current US\$. Source: World Bank (2002)  
Agricultural trade refers to all agricultural products, while livestock trade refers to trade in livestock products and live animals. Source: FAO (2005b)

### Export/import 'dependency' for livestock products

Product	Exports as percentage of production				Imports as percentage of consumption			
	1980	1990	2000	2002	1980	1990	2000	2002
Meat, total	0.00	0.00	0.00	0.00	0.46	2.21	5.49	2.56
Beef	0.00	0.00	0.00	0.00	1.40	5.57	10.55	0.00
Sheep and goat	0.00	0.00	0.00	0.00	0.00	0.00	0.00	0.00
Pig	0.00	0.00	0.00	0.00	0.25	0.39	0.55	0.11
Poultry	0.00	0.00	0.00	0.00	0.00	10.44	26.54	25.57
Milk, equivalent	0.00	0.00	0.00	0.00	31.5	29.61	16.13	17.98
Eggs, total	0.00	0.00	0.00	0.00	0.00	0.00	0.00	0.00

Source: FAO (2005a)

Product	Net exports as percentage of production				Net imports as percentage of consumption			
	1980	1990	2000	2002	1980	1990	2000	2002
Meat, total	0.00	0.00	0.00	0.00	0.46	2.21	5.49	2.56
Beef	0.00	0.00	0.00	0.00	1.40	5.57	10.55	0.00
Sheep and goat	0.00	0.00	0.00	0.00	0.00	0.00	0.00	0.00
Pig	0.00	0.00	0.00	0.00	0.00	0.00	0.00	0.00
Poultry	0.00	0.00	0.00	0.00	0.00	0.00	0.00	0.00
Milk, equivalent	0.00	0.00	0.00	0.00	31.5	29.61	16.13	17.98
Eggs, total	0.00	0.00	0.00	0.00	0.00	0.00	0.00	0.00

Source: FAO (2005a)

## Trade in live animals

Species	1980			1990			2000			2002		
	Export	Import	Net trade	Export	Import	Net trade	Export	Import	Net trade	Export	Import	Net trade
<b>Quantities (count)</b>												
Cattle	0	11	-11	0	0	0	0	0	0	0	0	0
Sheep and goats		83	-83		0	0		0	0		0	0
Pigs		0	0		160	-160		0	0		0	0
Poultry (1,000)		20	-20		50	-50		70	-70		15	-15
<b>Value (1,000 US\$)</b>												
Cattle	0	1	-1	0	0	0	0	0	0	0	0	0
Sheep and goats		3	-3		0	0		0	0		0	0
Pigs		0	0		120	-120		0	0		0	0
Poultry (1,000)		7	-7		50	-50		40	-40		4	-4
<b>Total</b>	<b>0</b>	<b>11</b>	<b>-11</b>	<b>0</b>	<b>170</b>	<b>-170</b>	<b>0</b>	<b>40</b>	<b>-40</b>	<b>0</b>	<b>4</b>	<b>-4</b>

**Net trade:** Exports less Imports

Blanks represent no data

Source: FAO (2005a)

## Trade in livestock products

Product	1980			1990			2000			2002		
	Export	Import	Net trade	Export	Import	Net trade	Export	Import	Net trade	Export	Import	Net trade
<b>Quantities (metric tonnes)</b>												
Meat, total	0	52	-52	0	318	-318	0	1,043	-1,043	0	481	-481
Beef	0	31	-31	0	195	-195	0	533	-533	0	0	0
Mutton and goat												
Pig		20	-20		35	-35		60	-60		12	-12
Poultry		0	0		80	-80		430	-430		469	-469
Other	0	1	-1	0	8	-8	0	21	-21	0	0	0
Milk, equivalent	0	3,432	-3,432	0	4,517	-4,517	0	3,084	-3,084	0	3,582	-3,582
Eggs, total												
Hides and skins	60		60	75		75	0		0	20		20
<b>Value (1,000 US\$)</b>												
Meat, total	0	131	-131	0	740	-740	0	1,775	-1,775	0	483	-483
Beef	0	72	-72	0	400	-400	0	1,100	-1,100	0	0	0
Mutton and goat		0	0		0	0		0	0		0	0
Pig		59	-59		140	-140		215	-215		39	-39
Poultry		0	0		200	-200		460	-460		444	-444
Other	0	0	0	0	0	0	0	0	0	0	0	0
Milk, equivalent	0	775	-775	0	1,045	-1,045	0	961	-961	0	1,287	-1,287
Eggs, total												
Hides and skins	63		63	78		78	0		0	15		15
<b>Total</b>	<b>63</b>	<b>906</b>	<b>-843</b>	<b>78</b>	<b>1,785</b>	<b>-1,707</b>	<b>0</b>	<b>2,736</b>	<b>-2,736</b>	<b>15</b>	<b>1,770</b>	<b>-1,755</b>

**Net trade:** Exports less Imports

Blanks represent no data

Source: FAO (2005a)

## 6. LIVESTOCK HEALTH

### Total number of cases/outbreaks of selected diseases reported in all susceptible species

Disease	1997	1998	1999	2000	2001	2002	2003
African swine fever						-	56/8
Avian Influenza <sup>1</sup>						...	...
Bluetongue						-	-
BSE <sup>2</sup>						...	...
CBPP <sup>3</sup>						-	-
Classical swine fever						...	...
Foot and mouth disease						-	-
Lumpy skin disease						-	-
Newcastle disease						-	.../...
Peste des petits ruminants						-	.../...
Rift Valley fever						-	-
Rinderpest						(1967)	(1967)
Sheep and goat pox						...	...
Swine vesicular disease						...	000
Vesicular stomatitis						-	000

<sup>1</sup> Highly pathogenic avian influenza

<sup>2</sup> Bovine spongiform encephalopathy

<sup>3</sup> Contagious bovine pleuropneumonia

no./no. number of cases/outbreaks, ... no information, - disease not reported, 000 disease never reported; (month/year) date of the last reported occurrence of the disease in previous years

Source: OIE (2004)

## 7. REFERENCES AND FURTHER READING

**FAO (2001)** Agro-ecological Distributions for Africa, Asia and North and Central America, Consultants' Report. Food and Agriculture Organisation, Rome.

**FAO (2003)** Cattle and small ruminant production systems in sub-Saharan Africa: a systematic review. Food and Agriculture Organisation, Rome.

**FAO (2005a)** FAOSTAT data. Food and Agriculture Organisation, Rome.  
<http://faostat.external.fao.org/default.jsp> (accessed March, 2005).

**FAO (2005b)** Global Livestock Production and Health Atlas. Food and Agriculture Organisation, Rome. <http://www.fao.org/ag/aga/glipha/index.jsp> (accessed March, 2005).

**LandScan (2002)** Global Population Database. Oak Ridge National Laboratory, Oakridge. <http://www.ornl.gov/gist/>

**OIE (2004)** HANDISTATUS II. Office International des Epizooties, Paris.  
<http://www.oie.int/hs2/> (accessed March, 2005).

**UNDP (2004)**. The Human development Reports, United Nations Development Programme, New York. <http://hdr.undp.org/statistics/>

**World Bank (2002)** The 2002 World Bank development indicators CD-Rom. The World Bank, Washington DC.