

LIVESTOCK SECTOR BRIEF

NAMIBIA

Food and Agriculture Organization
of the United Nations • **FAO**

Livestock Information, Sector Analysis
and Policy Branch • **AGAL**



March 2005

TABLE OF CONTENTS

Preface	ii
1. General Information.....	1
Human population, land and socio-economics	1
Human population trends	2
Trends in agricultural land	2
2. Livestock Resources.....	2
Livestock populations	2
Contribution of different species to total livestock units	3
Selected indicators of livestock resources	3
Agro-ecological zones and densities of livestock species (2000)	4
3. Livestock Production	6
Trends in annual production of meat, milk and eggs	6
Composition of total meat production	6
Carcass weights and percentage slaughtered by species.....	7
Milk yields and proportion of dairy animals.....	7
Egg yields and proportion of laying birds.....	7
Estimated feed used for livestock production.....	8
Trends in annual per capita production of meat, milk and eggs.....	8
4. Consumption of Meat, Milk and Eggs	9
Trends in annual consumption of meat, milk and eggs	9
Trends in annual per capita consumption of meat, milk and eggs.....	9
Production versus consumption for meat, milk and eggs (2002)	10
5. Trade in Livestock and Livestock Products.....	11
Trade in agricultural and livestock products.....	11
Export/import 'dependency' for livestock products	11
Trade in live animals	12
Trade in livestock products	13
6. Livestock Health	14
Total number of cases/outbreaks of selected diseases reported in all susceptible species	14
7. References and Further Reading.....	15

Data contained in this Livestock Sector Brief are taken from official sources. Official sources are no guarantee for data accuracy and the figures reported in this brief should be taken as indicative and not be used for official purposes. The Food and Agriculture Organization of the United Nations assumes no responsibility for its accuracy, completeness and coherence.

PREFACE

The Livestock Sector Briefs (LSB) are intended to provide a quick overview and an approximate outlook for the livestock sector of the respective country using figures and quantitative indicators originating from official sources. The LSBs are complemented by a synthesis of policy documents available in the public domain.

The majority of the data in the LSBs refer to the country as a whole and come from FAOSTAT, which is available on the internet (<http://faostat.external.fao.org/default.jsp>). FAO, as part of its mandate, compiles information and data on various aspects of food and agriculture from all countries. The data are analysed and interpreted to support FAO's programmes and activities and, in accordance with the basic functions of the Organization, they are disseminated to the public through publications, CD-ROM, diskettes and the Internet. The country level data are officially submitted to the Division for Statistics of FAO (ESS) by various ministries of the respective countries. For details of data collection procedures see <http://faostat.fao.org/abcdq/about.htmx>. The figures submitted often display inconsistencies across ministries, for example reported meat production does not always match reported meat consumption when taking into account imports and exports. FAO tries to reconcile the figures, to the effect that FAO statistics may differ from those originally submitted.

The LSBs utilise FAOSTAT data from the following domains: human population, land use, agriculture production, food supply and agricultural and food trade. These are used to derive a standard set of indicators that can quickly be compared across the countries.

Data on the economy are from the World Bank's World Development Indicators CD-Rom, which is also available online <http://www.worldbank.org/data/> and is updated every year. Animal health data are taken from the Office International des Epizooties (OIE) HANDISTATUS II <http://www.oie.int/hs2/>. These are official data supplied by member nations.

For any feedback and comment, please contact:

Pius Chilonda - Livestock Information Analyst
Livestock Information, Sector Analysis and Policy Branch
Animal Production and Health Division
Food and Agricultural Organisation
Viale delle Terme di Caracalla
00100 Rome, Italy

Tel: 00 39 06 57056691
Fax: 00 39 06 57055749
Email: Pius.Chilonda@fao.org

1. GENERAL INFORMATION

Human population, land and socio-economics

Human population	2.0 million
Population density on total land	2.4 persons/sqkm
Annual growth rate (1990-2000)	2.7 %
Population in agriculture	0.9 million
As proportion of total population	47.4 %
Total land area	823,290 sqkm
Agricultural land	388,200 sqkm
As proportion of total land	47.2 %
Land under pasture	380,000 sqkm
As proportion of total land	97.9 %
Irrigated area	70 ha
Agricultural land per 100 people	1,980 ha
Agricultural land per 100 people in agriculture	4,174 ha
Agricultural population density on agricultural land	2.4 persons/sqkm
GDP ¹	4,373 million US\$
GDP annual growth rate (1990-2000)	3.2 %
GDP per capita/year ¹	2,203 US\$
GDP per capita annual growth rate (1990-2000)	0.4 %
Agriculture, GDP	403 million US\$
As proportion of total GDP	9.2 %
Livestock, GDP ¹	320 million US\$
As proportion of agricultural GDP	79.4 %
Human development Rank	126 Ranking ²
Human development index	0.607
Poverty incidence ³	
Total	na %
Urban	na %
Rural	na %

¹Constant 1995 US\$ ² The HDI rank is determined using HDI values to the fifth decimal point – from 177 countries, as compiled by the UNDP; ³ National poverty line; na: not available

Source: World Bank (2002); UNDP (2004); FAO (2005a)

Human population trends

Values expressed in 1,000

Population segment	Year				Annual growth rate (%)	
	1980	1990	2000	2002	1980-1990	1990-2000
Total	1,018	1,409	1,894	1,961	3.3	3.0
Rural	786	1,034	1,309	1,335	2.8	2.4
Urban	232	375	584	626	4.9	4.5

Source: FAO (2005a)

Trends in agricultural¹ land

Values expressed in sqkm

Land type	Year				Annual growth rate (%)	
	1980	1990	2000	2002	1980-1990	1990-2000
Total	386,570	386,620	388,200	388,200	0.0	0.0
Cropped ²	6,570	6,620	8,200	8,200	0.1	2.2
Pastures	380,000	380,000	380,000	380,000	0.0	0.0

¹The sum of area under arable land, permanent crops and permanent pastures

²Arable and permanent crops

Source: FAO (2005a)

2. LIVESTOCK RESOURCES

Livestock populations

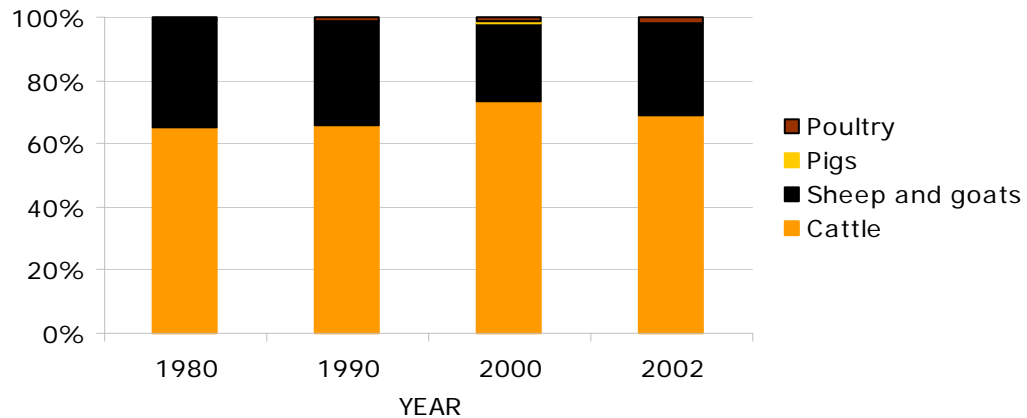
Values expressed in 1,000

Species	Year				Annual growth rate (%)	
	1980	1990	2000	2002	1980-1990	1990-2000
Cattle	2,481	2,087	2,505	2,336	-1.7	1.8
Sheep and goats	6,391	5,188	4,296	4,960	-2.1	-1.9
Pigs	15	18	23	24	1.8	2.6
Poultry	1,200	1,700	2,400	2,750	3.5	3.5
Total LUs	1,895	1,583	1,711	1,696	-1.8	0.8

LU: *Livestock unit*; **conversion factors:** cattle (0.50), sheep and goats (0.10), pigs (0.20) and poultry (0.01)

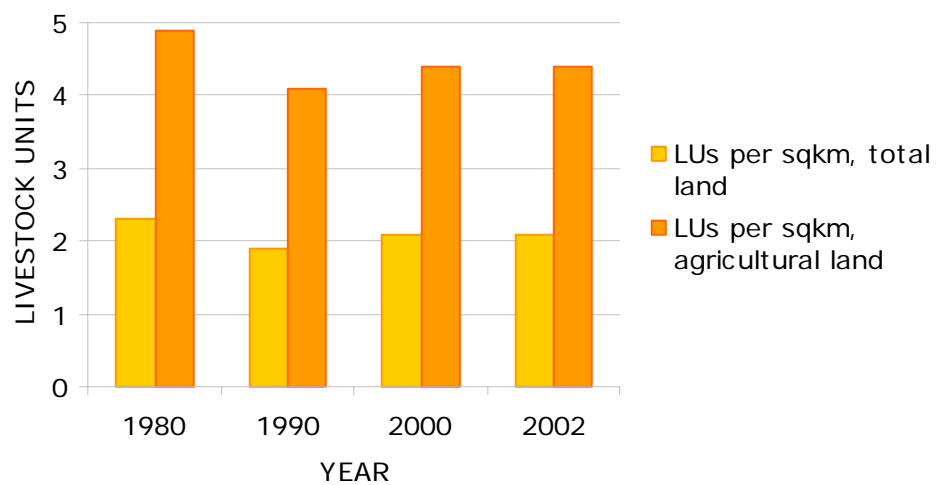
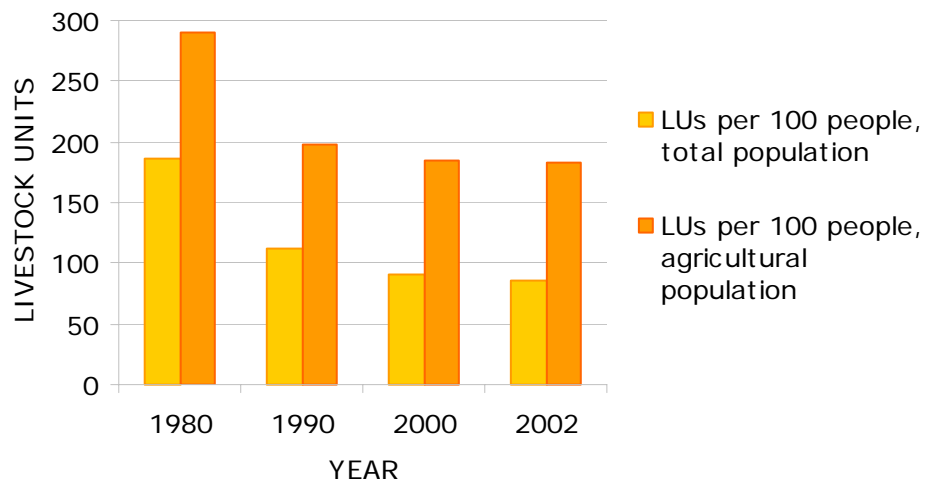
Source: FAO (2005a)

Contribution of different species to total livestock units



Source: FAO (2005a)

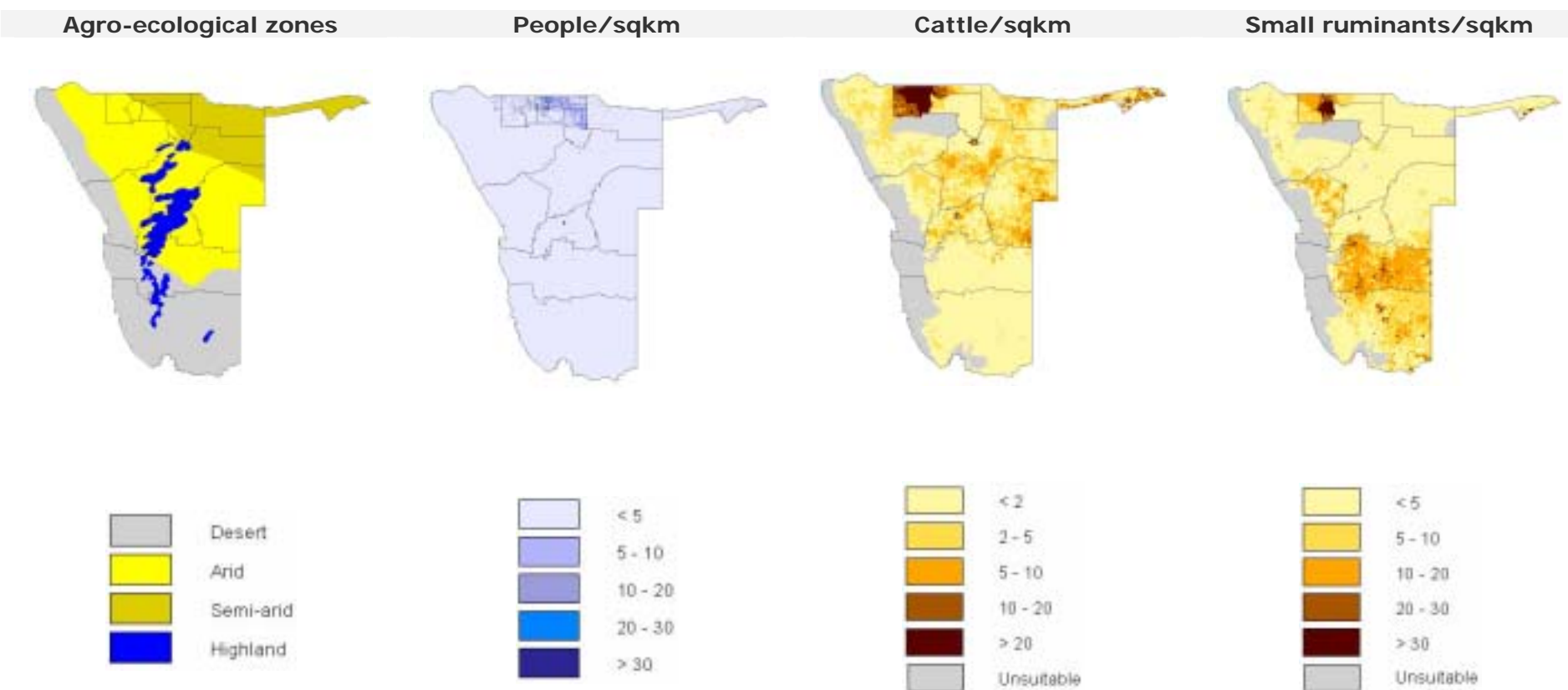
Selected indicators of livestock resources



Source: FAO (2005a)

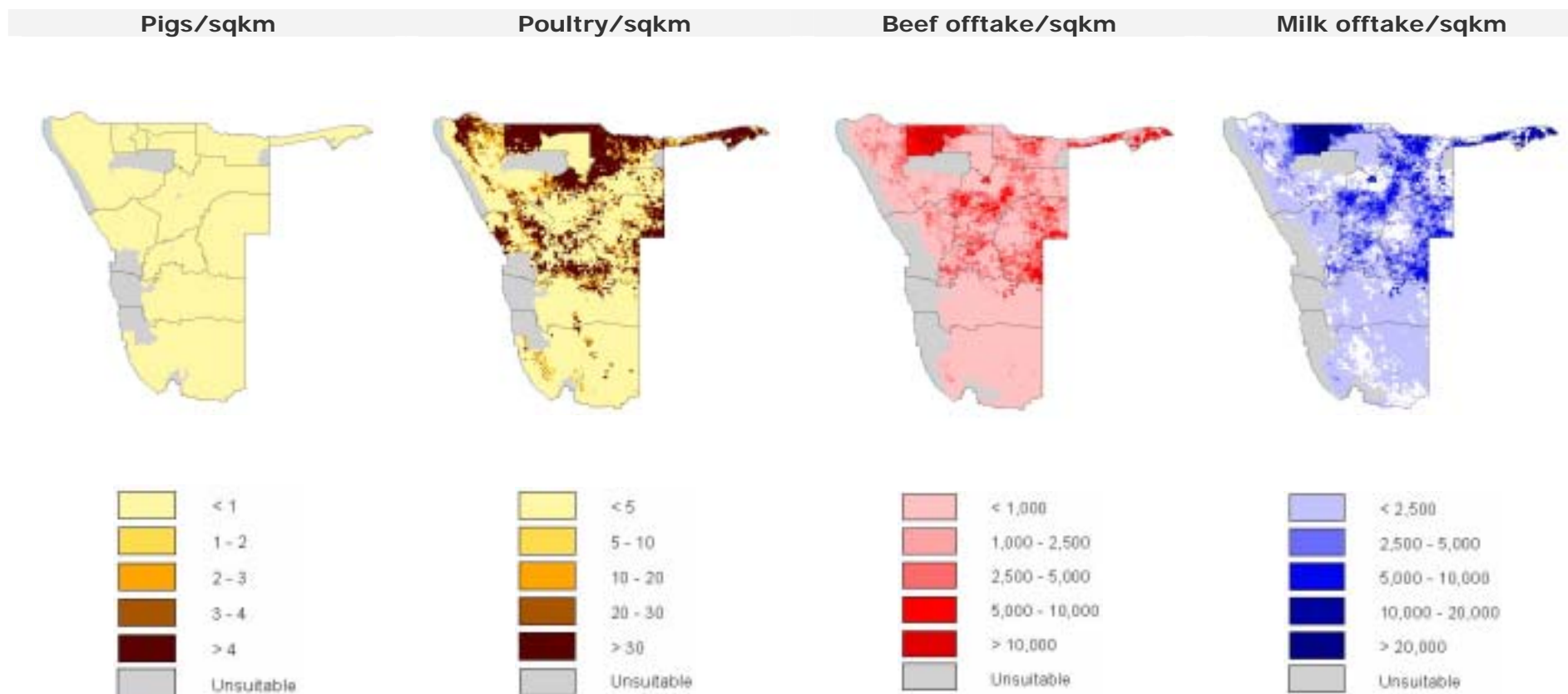
Agro-ecological zones and densities of livestock species (2000)

Density calculated on total land area¹



¹Densities for livestock populations and production are based on total land suitable for livestock production

Source: FAO (2001); LandScan (2002), FAO (2005b)



Source: FAO (2005b); FAO (2003)

3. LIVESTOCK PRODUCTION

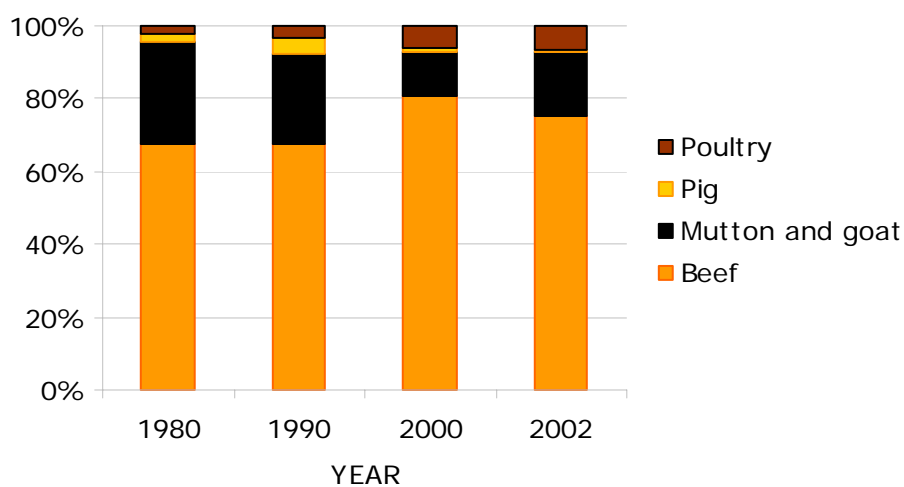
Trends in annual production of meat, milk and eggs

1,000 metric tonnes

Product	Year				Annual growth rate (%)	
	1980	1990	2000	2002	1980-1990	1990-2000
Meat, total	74.1	61.4	83.1	84.9	-1.9	3.1
Beef	48.1	38.9	63.8	60.8	-2.1	5.1
Mutton and goat	20.2	14.3	9.7	13.9	-3.4	-3.8
Pig	1.7	2.5	0.7	0.6	3.8	-11.7
Poultry	1.4	2.0	4.7	5.4	3.5	8.8
Milk, total	68.0	75.0	88.5	105.0	1.0	1.7
Eggs, total	0.9	1.4	2.3	2.5	4.2	5.2

Source: FAO (2005a)

Composition of total meat production



Source: FAO (2005a)

Carcass weights and percentage slaughtered by species

Species/year	Carcass weight (kg/animal)				Percentage slaughtered/year			
	1980	1990	2000	2002	1980	1990	2000	2002
Cattle	212.0	217.5	234.1	234.0	9.1	8.6	10.9	11.1
Sheep	16.0	16.4	17.8	18.0	21.9	18.0	11.4	17.4
Goat	12.0	12.0	12.0	12.0	19.8	19.9	21.1	19.7
Pigs	54.9	55.0	55.0	55.0	211.1	257.5	57.0	43.8
Poultry	0.8	0.8	1.1	1.2	150.0	150.0	175.3	166.7

Source: FAO (2005a)

Milk yields and proportion of dairy animals

Species/year	Milk yield (kg/year)				Percentage milked			
	1980	1990	2000	2002	1980	1990	2000	2002
Cattle	412	399	402	420	6.7	9.0	8.8	10.7

Source: FAO (2005a)

Egg yields and proportion of laying birds

Species/year	Eggs (kg/year)				Percentage laying			
	1980	1990	2000	2002	1980	1990	2000	2002
Chicken	2.5	2.5	2.6	2.5	30.0	30.0	25.8	25.0

Source: FAO (2005a)

Estimated feed used for livestock production

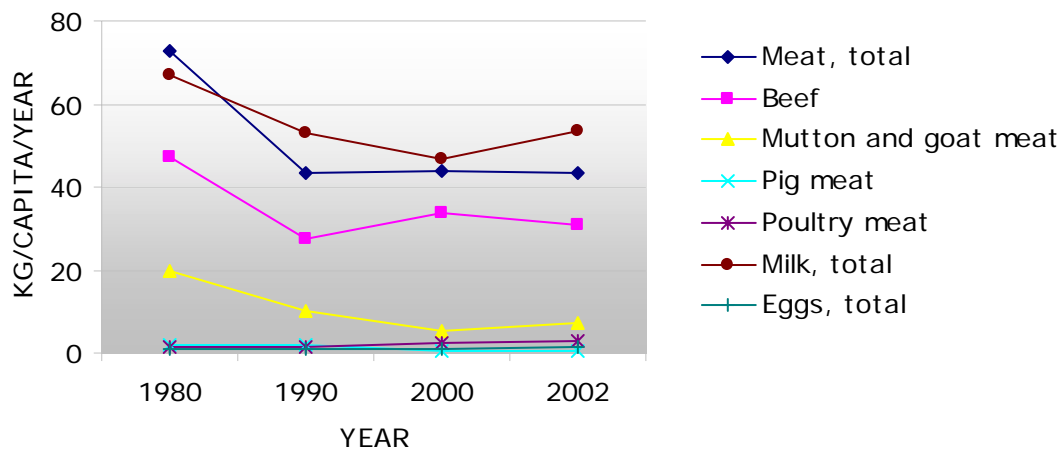
1,000 metric tonnes

Product	Year				Annual growth rate (%)	
	1980	1990	2000	2002	1980-1990	1990-2000
Maize	1.0	6.3	47.5	51.2	19.6	22.5
Barley	0	0	0	0		
Sorghum						
Millet						
Wheat						
Brans	12.8	17.8	28.5	28.6	3.4	4.9
Rice Paddy, equivalent						
Roots and Tuber, dry equivalent						
Pulses						
Oil crops	0.0	0.0	0.0	0.4		

Blanks represent no data

Source: FAO (2005a)

Trends in annual per capita production of meat, milk and eggs



Source: FAO (2005a)

4. CONSUMPTION OF MEAT, MILK AND EGGS

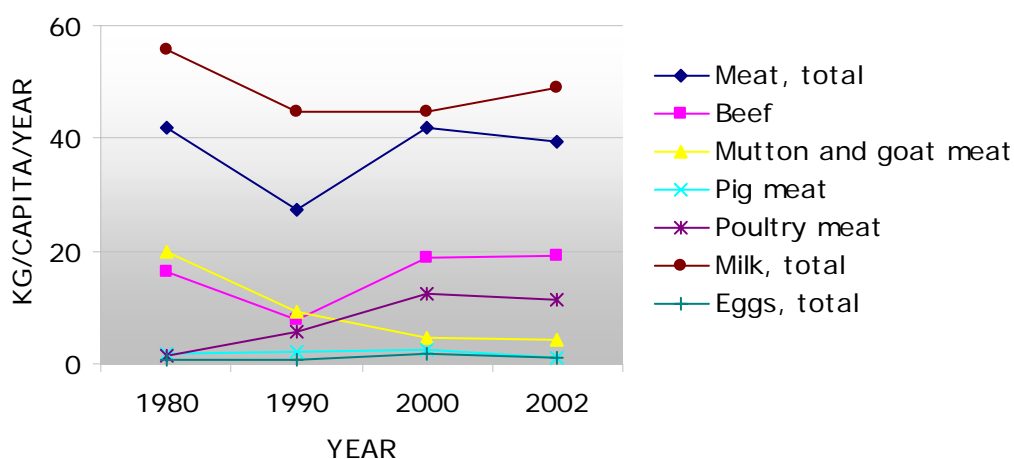
Trends in annual consumption of meat, milk and eggs

1,000 metric tonnes

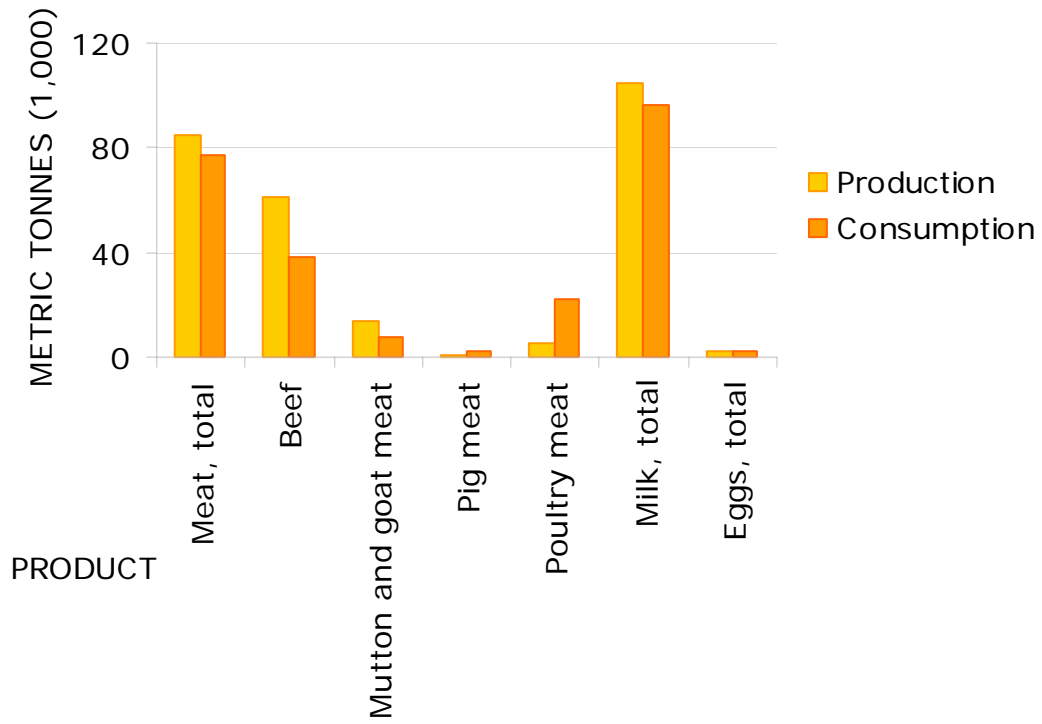
Product	Year				Annual growth rate (%)	
	1980	1990	2000	2002	1980-1990	1990-2000
Meat, total	42.8	38.5	79.4	77.2	-1.0	7.5
Beef	16.8	11.0	35.8	37.9	-4.2	12.6
Sheep and goat	20.2	12.9	8.9	8.0	-4.4	-3.6
Pig	1.7	2.8	4.6	2.4	4.8	5.1
Poultry	1.4	8.2	23.3	22.5	19.1	10.9
Milk, total	56.6	63.2	84.6	96.0	1.1	3.0
Eggs, total	0.7	1.0	3.1	2.4	4.4	11.8

Source: FAO (2005a)

Trends in annual per capita consumption of meat, milk and eggs



Source: FAO (2005a)

Production versus consumption for meat, milk and eggs (2002)

Source: FAO (2005a)

5. TRADE IN LIVESTOCK AND LIVESTOCK PRODUCTS

Trade in agricultural and livestock¹ products

Values in million US\$

Product	Exports				Imports			
	1980	1990	2000	2002	1980	1990	2000	2002
Total	1,712	1,220	1,558	1,403	1,542	1,584	1,746	1,421
Agricultural	188.4	146.8	176.5	187.4	70.7	110.0	227.0	166.4
% agricultural	11.0	12.0	11.3	13.4	4.6	6.9	13.0	11.7
Livestock	188.4	146.8	93.7	68.1	2.2	12.1	41.6	23.1
% livestock	11.0	12.0	6.0	4.9	0.1	0.8	2.4	1.6

¹Total trade in goods and services expressed in current US\$. Source: World Bank (2002)
Agricultural trade refers to all agricultural products, while livestock trade refers to trade in livestock products and live animals. Source: FAO (2005b)

Export/import 'dependency' for livestock products

Product	Exports as percentage of production				Imports as percentage of consumption			
	1980	1990	2000	2002	1980	1990	2000	2002
Meat, total	41.31	46.64	40.56	37.22	0.00	16.77	40.31	17.31
Beef	63.43	69.78	47.41	38.30	0.00	0.00	7.98	6.77
Sheep and goat	0.00	9.56	18.58	45.13	0.00	0.06	12.02	4.81
Pig	0.00	0.00	38.31	114.28	0.00	8.93	80.21	100.17
Poultry	0.00	0.00	4.31	1.24	0.00	75.24	95.11	30.75
Milk, equivalent	0.00	0.00	4.24	7.56	0.00	0.00	43.23	24.42
Eggs, total	0.00	0.00	2.96	10.79	0.00	0.00	43.37	30.38

Source: FAO (2005a)

Product	Net exports as percentage of production				Net imports as percentage of consumption			
	1980	1990	2000	2002	1980	1990	2000	2002
Meat, total	41.31	36.12	2.02	24.62	0.00	0.00	0.00	0.00
Beef	63.43	69.78	42.94	43.13	0.00	0.00	0.00	0.00
Sheep and goat	0.00	9.50	7.46	29.13	0.00	0.00	0.00	0.00
Pig	0.00	0.00	0.00	0.00	0.00	8.93	74.14	72.72
Poultry	0.00	0.00	0.00	0.00	0.00	75.24	94.23	30.45
Milk, equivalent	0.00	0.00	0.00	0.00	0.00	0.00	38.80	16.15
Eggs, total	0.00	0.00	0.00	0.00	0.00	0.00	41.18	19.31

Source: FAO (2005a)

Trade in live animals

Species	1980			1990			2000			2002		
	Export	Import	Net trade	Export	Import	Net trade	Export	Import	Net trade	Export	Import	Net trade
Quantities (count)												
Cattle	236,435	0	236,435	144,582	0	144,582	68,527	652	67,875	14,147	366	13,781
Sheep and goats	204,050	0	204,050	853,373	2,700	850,673	918,298	4,672	913,626	772,154	2,964	769,190
Pigs	0	11,000	-11,000	0	19,746	-19,746	32	4,371	-4,339	338	1,741	-1,403
Poultry (1,000)	0	0	0	0	0	0	0	461	-461	6	312	-306
Value (1,000 US\$)												
Cattle	92,777	0	92,777	42,957	0	42,957	21,000	686	20,314	9,110	247	8,863
Sheep and goats	11,693	0	11,693	37,539	115	37,424	37,094	438	36,656	22,631	363	22,268
Pigs	0	2,200	-2,200	0	4,000	-4,000	26	700	-674	82	139	-57
Poultry (1,000)	0	0	0	0	0	0	0	519	-519	7	320	-313
Total	104,470	2,200	102,270	80,496	4,115	76,381	58,120	2,343	55,777	31,830	1,069	30,761

Net trade: Exports less Imports

Blanks represent no data

Source: FAO (2005a)

Trade in livestock products

Product	1980			1990			2000			2002		
	Export	Import	Net trade	Export	Import	Net trade	Export	Import	Net trade	Export	Import	Net trade
Quantities (metric tonnes)												
Meat, total	30,605	0	30,605	28,618	6,456	22,162	33,689	32,013	1,676	31,612	13,370	18,242
Beef	30,490	0	30,490	27,147	0	27,147	30,258	2,856	27,401	23,301	2,568	20,733
Mutton and goat	0	0	0	1,365	8	1,357	1,796	1,075	721	6,282	386	5,896
Pig	0	0	0	0	248	-248	278	3,676	-3,398	659	2,406	-1,747
Poultry	0	0	0	0	6,200	-6,200	204	22,145	-21,941	67	6,913	-6,846
Other	115	0	-115	106	0	-106	1,153	2,261	-3,414	1,303	1,097	-2,400
Milk, equivalent	0	0	0	0	0	0	3,748	36,577	-32,829	7,938	23,451	-15,512
Eggs, total	0	0	0	0	0	0	67	1,328	-1,261	266	730	-464
Hides and skins	467	0	467	85	0	85	0	0	0	3,939	600	3,339
Value (1,000 US\$)												
Meat, total	34,200	0	34,200	60,984	7,982	53,002	34,774	27,219	7,555	26,425	14,964	11,461
Beef	34,200	0	34,200	59,084	0	59,084	31,000	3,046	27,954	18,620	2,069	16,551
Mutton and goat	0	0	0	1,900	12	1,888	1,886	1,291	595	5,548	672	4,876
Pig	0	0	0	0	670	-670	1,047	6,423	-5,376	1,087	3,262	-2,175
Poultry	0	0	0	0	7,300	-7,300	167	14,940	-14,773	110	8,050	-7,940
Other	0	0	0	0	0	0	674	1,519	-2,193	1,060	911	-1,971
Milk, equivalent	0	0	0	0	0	0	554	11,184	-10,630	1,598	6,380	-4,782
Eggs, total	0	0	0	0	0	0	195	843	-648	365	375	-10
Hides and skins	49,780	0	49,780	5,345	0	5,345	0	0	0	7,737	323	7,414
Total	83,980	0	83,980	66,329	7,982	58,347	35,523	39,246	-3,723	36,125	22,042	14,083

Net trade: Exports less Imports

Blanks represent no data

Source: FAO (2005a)

6. LIVESTOCK HEALTH

Total number of cases/outbreaks of selected diseases reported in all susceptible species

Disease	1997	1998	1999	2000	2001	2002	2003
African swine fever	72/1	6/1	(04/1998)	(04/1998)	70/1	(11/2001)	(11/2001)
Avian Influenza ¹	000	000	000	000	000	000	000
Bluetongue	17/2	(05/1997)	5/2	20/4	11/2	2/1	(04/2002)
BSE ²	000	000	000	000	000	000	000
CBPP ³	281/26	.../8	15/4	170/18	41/9	104/9	129/4
Classical swine fever	(1917)	(1917)	(1917)	(1917)	(1917)	(1917)	(1917)
Foot and mouth disease	(10/1994)	(10/1994)	(10/1994)	6/1	(08/2000)	(08/2000)	(08/2000)
Lumpy skin disease	1/1	(09/1997)	193/26	1/1	.../...	234/34	151/52
Newcastle disease	201/6	63/6	630/2	47/4	41/2	75/1	33/2
Peste des petits ruminants	000	000	000	000	000	000	000
Rift Valley fever	(1985)	(05/1985)	(05/1985)	(05/1985)	(05/1985)	(05/1985)	(05/1985)
Rinderpest	(1907)	(1907)	(1907)	(1907)	(1907)	(1907)	(1907)
Sheep and goat pox	(1910)	(1910)	(1910)	(1910)	(1910)	(1910)	(1910)
Swine vesicular disease	000	000	000	000	000	000	000
Vesicular stomatitis	000	000	000	000	000	000	000

¹ Highly pathogenic avian influenza

² Bovine spongiform encephalopathy

³ Contagious bovine pleuropneumonia

no./no. number of cases/outbreaks, ... no information, - disease not reported, 000 disease never reported; (month/year) date of the last reported occurrence of the disease in previous years

Source: OIE (2004)

7. REFERENCES AND FURTHER READING

FAO (2001) Agro-ecological Distributions for Africa, Asia and North and Central America, Consultants' Report. Food and Agriculture Organisation, Rome.

FAO (2003) Cattle and small ruminant production systems in sub-Saharan Africa: a systematic review. Food and Agriculture Organisation, Rome.

FAO (2005a) FAOSTAT data. Food and Agriculture Organisation, Rome.
<http://faostat.external.fao.org/default.jsp> (accessed March, 2005).

FAO (2005b) Global Livestock Production and Health Atlas. Food and Agriculture Organisation, Rome. <http://www.fao.org/ag/aga/glipha/index.jsp> (accessed March, 2005).

LandScan (2002) Global Population Database. Oak Ridge National Laboratory, Oakridge. <http://www.ornl.gov/gist/>

OIE (2004) HANDISTATUS II. Office International des Epizooties, Paris.
<http://www.oie.int/hs2/> (accessed March, 2005).

UNDP (2004). The Human development Reports, United Nations Development Programme, New York. <http://hdr.undp.org/statistics/>

World Bank (2002) The 2002 World Bank development indicators CD-Rom. The World Bank, Washington DC.