

LIVESTOCK SECTOR BRIEF

NIGER

Food and Agriculture Organization
of the United Nations • **FAO**

Livestock Information, Sector Analysis
and Policy Branch • **AGAL**



March 2005

TABLE OF CONTENTS

Preface	ii
1. General Information.....	1
Human population, land and socio-economics	1
Human population trends	2
Trends in agricultural land	2
2. Livestock Resources.....	2
Livestock populations	2
Contribution of different species to total livestock units	3
Selected indicators of livestock resources	3
Agro-ecological zones and densities of livestock species (2000)	4
3. Livestock Production	6
Trends in annual production of meat, milk and eggs	6
Composition of total meat production	6
Carcass weights and percentage slaughtered by species.....	7
Milk yields and proportion of dairy animals.....	7
Egg yields and proportion of laying birds.....	7
Estimated feed used for livestock production.....	8
Trends in annual per capita production of meat, milk and eggs.....	8
4. Consumption of Meat, Milk and Eggs	9
Trends in annual consumption of meat, milk and eggs	9
Trends in annual per capita consumption of meat, milk and eggs.....	9
Production versus consumption for meat, milk and eggs (2002)	10
5. Trade in Livestock and Livestock Products.....	11
Trade in agricultural and livestock products.....	11
Export/import 'dependency' for livestock products	11
Trade in live animals	12
Trade in livestock products	13
6. Livestock Health	14
Total number of cases/outbreaks of selected diseases reported in all susceptible species	14
7. References and Further Reading.....	15

Data contained in this Livestock Sector Brief are taken from official sources. Official sources are no guarantee for data accuracy and the figures reported in this brief should be taken as indicative and not be used for official purposes. The Food and Agriculture Organization of the United Nations assumes no responsibility for its accuracy, completeness and coherence.

PREFACE

The Livestock Sector Briefs (LSB) are intended to provide a quick overview and an approximate outlook for the livestock sector of the respective country using figures and quantitative indicators originating from official sources. The LSBs are complemented by a synthesis of policy documents available in the public domain.

The majority of the data in the LSBs refer to the country as a whole and come from FAOSTAT, which is available on the internet (<http://faostat.external.fao.org/default.jsp>). FAO, as part of its mandate, compiles information and data on various aspects of food and agriculture from all countries. The data are analysed and interpreted to support FAO's programmes and activities and, in accordance with the basic functions of the Organization, they are disseminated to the public through publications, CD-ROM, diskettes and the Internet. The country level data are officially submitted to the Division for Statistics of FAO (ESS) by various ministries of the respective countries. For details of data collection procedures see <http://faostat.fao.org/abcdq/about.htm>. The figures submitted often display inconsistencies across ministries, for example reported meat production does not always match reported meat consumption when taking into account imports and exports. FAO tries to reconcile the figures, to the effect that FAO statistics may differ from those originally submitted.

The LSBs utilise FAOSTAT data from the following domains: human population, land use, agriculture production, food supply and agricultural and food trade. These are used to derive a standard set of indicators that can quickly be compared across the countries.

Data on the economy are from the World Bank's World Development Indicators CD-Rom, which is also available online <http://www.worldbank.org/data/> and is updated every year. Animal health data are taken from the Office International des Epizooties (OIE) HANDISTATUS II <http://www.oie.int/hs2/>. These are official data supplied by member nations.

For any feedback and comment, please contact:

Pius Chilonda - Livestock Information Analyst
Livestock Information, Sector Analysis and Policy Branch
Animal Production and Health Division
Food and Agricultural Organisation
Viale delle Terme di Caracalla
00100 Rome, Italy

Tel: 00 39 06 57056691
Fax: 00 39 06 57055749
Email: Pius.Chilonda@fao.org

1. GENERAL INFORMATION

Human population, land and socio-economics

Human population	11.5 million
Population density on total land	9.1 persons/sqkm
Annual growth rate (1990-2000)	3.5 %
Population in agriculture	10.1 million
As proportion of total population	87.3 %
Total land area	1,266,700 sqkm
Agricultural land	165,000 sqkm
As proportion of total land	13.0 %
Land under pasture	120,000 sqkm
As proportion of total land	72.7 %
Irrigated area	660 ha
Agricultural land per 100 people	143 ha
Agricultural land per 100 people in agriculture	164 ha
Agricultural population density on agricultural land	61.1 persons/sqkm
GDP ¹	2,386 million US\$
GDP annual growth rate (1990-2000)	3.2 %
GDP per capita/year ¹	209 US\$
GDP per capita annual growth rate (1990-2000)	-0.2 %
Agriculture, GDP	953 million US\$
As proportion of total GDP	39.9 %
Livestock, GDP ¹	284 million US\$
As proportion of agricultural GDP	29.8 %
Human development Rank	176 Ranking ²
Human development index	0.292
Poverty incidence ³	
Total	63.0 %
Urban	52.0 %
Rural	66.0 %

¹Constant 1995 US\$ ²The HDI rank is determined using HDI values to the fifth decimal point – from 177 countries, as compiled by the UNDP; ³National poverty line; na: not available

Source: World Bank (2002); UNDP (2004); FAO (2005a)

Human population trends

Values expressed in 1,000

Population segment	Year				Annual growth rate (%)	
	1980	1990	2000	2002	1980-1990	1990-2000
Total	5,586	7,650	10,742	11,544	3.2	3.5
Rural	4,883	6,419	8,531	9,049	2.8	2.9
Urban	704	1,232	2,211	2,495	5.8	6.0

Source: FAO (2005a)

Trends in agricultural¹ land

Values expressed in sqkm

Land type	Year				Annual growth rate (%)	
	1980	1990	2000	2002	1980-1990	1990-2000
Total	132,200	140,470	165,000	165,000	0.6	1.6
Cropped ²	35,520	36,050	45,000	45,000	0.1	2.2
Pastures	96,680	104,420	120,000	120,000	0.8	1.4

¹The sum of area under arable land, permanent crops and permanent pastures

²Arable and permanent crops

Source: FAO (2005a)

2. LIVESTOCK RESOURCES

Livestock populations

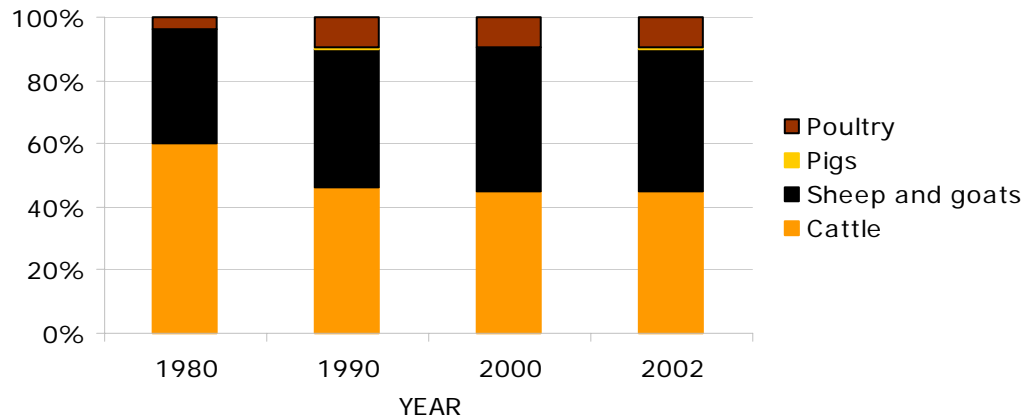
Values expressed in 1,000

Species	Year				Annual growth rate (%)	
	1980	1990	2000	2002	1980-1990	1990-2000
Cattle	3,353	1,711	2,216	2,260	-6.5	2.6
Sheep and goats	10,016	8,069	11,116	11,400	-2.1	3.3
Pigs	31	37	39	40	1.9	0.4
Poultry	10,000	17,800	23,500	24,500	5.9	2.8
Total LUs	2,784	1,848	2,463	2,523	-4.0	2.9

LU: *Livestock unit*; **conversion factors:** cattle (0.50), sheep and goats (0.10), pigs (0.20) and poultry (0.01)

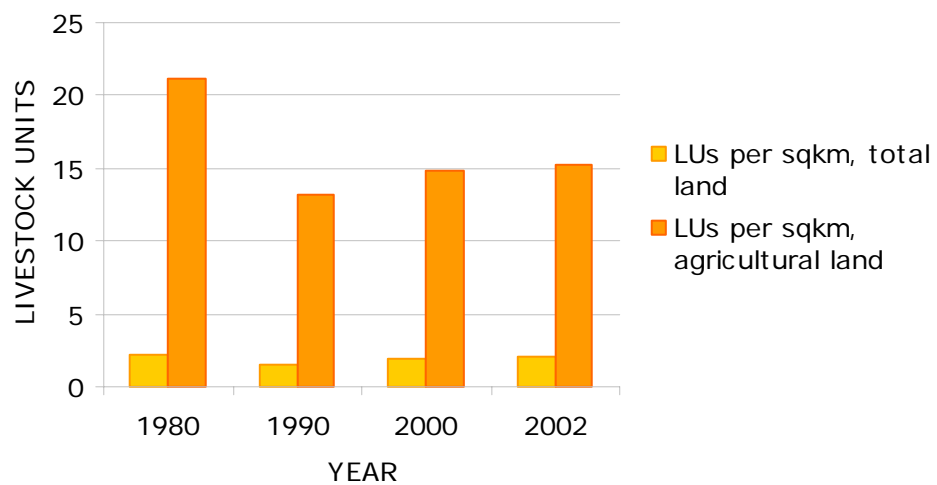
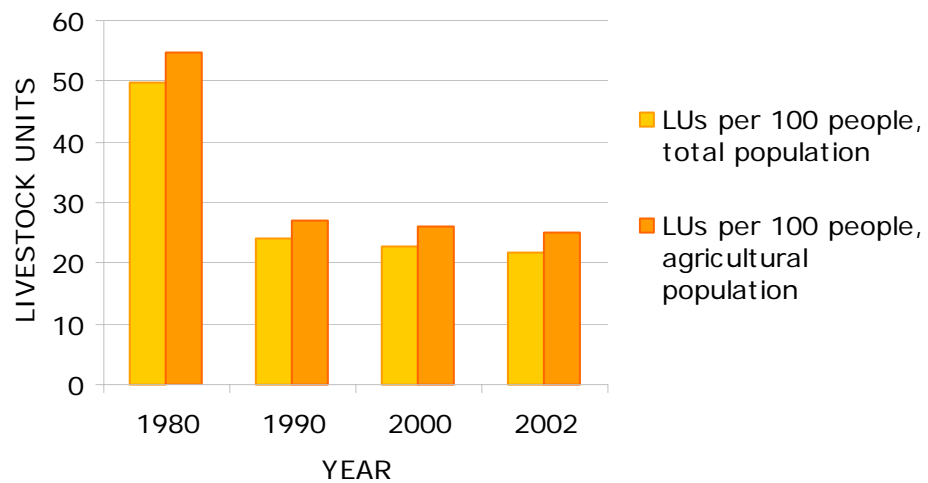
Source: FAO (2005a)

Contribution of different species to total livestock units



Source: FAO (2005a)

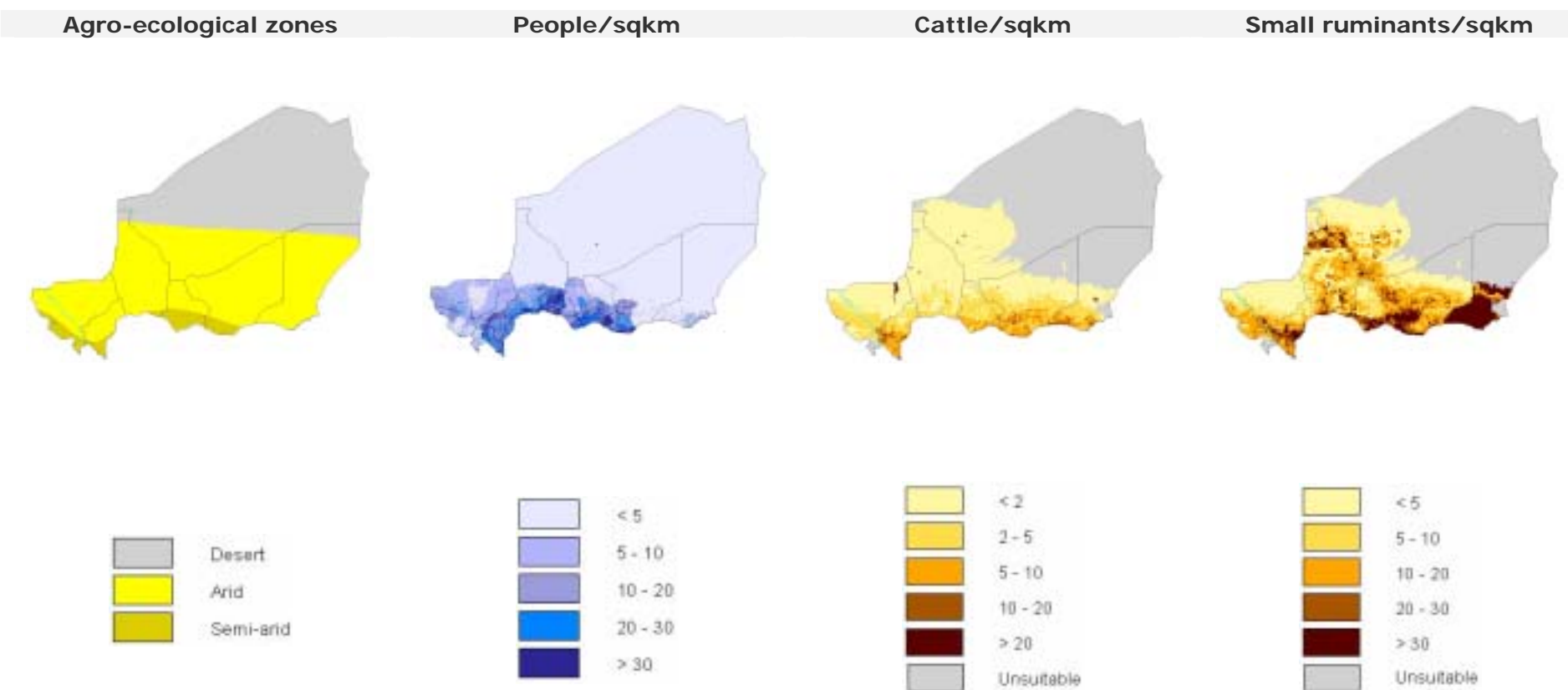
Selected indicators of livestock resources



Source: FAO (2005a)

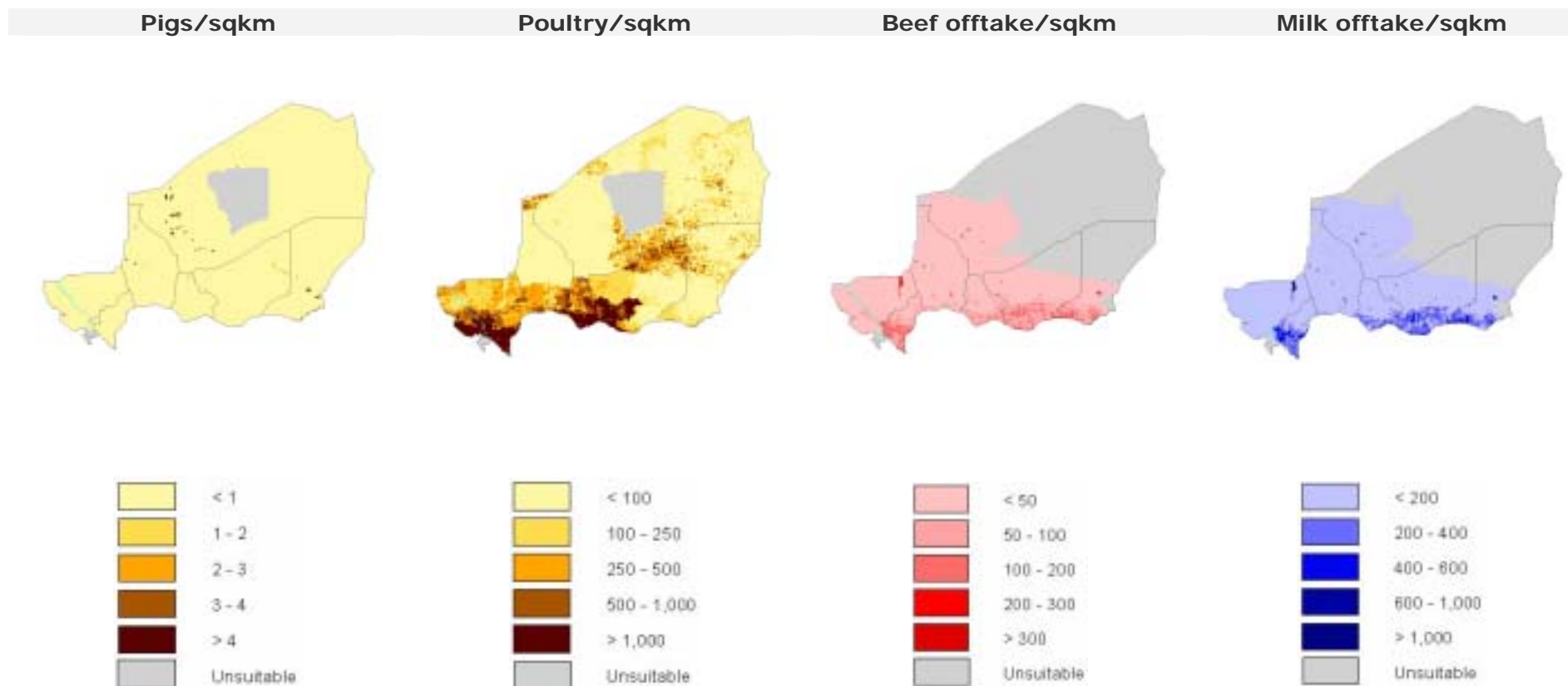
Agro-ecological zones and densities of livestock species (2000)

Density calculated on total land area¹



¹Densities for livestock populations and production are based on total land suitable for livestock production

Source: FAO (2001); LandScan (2002), FAO (2005b)



Source: FAO (2005b); FAO (2003)

3. LIVESTOCK PRODUCTION

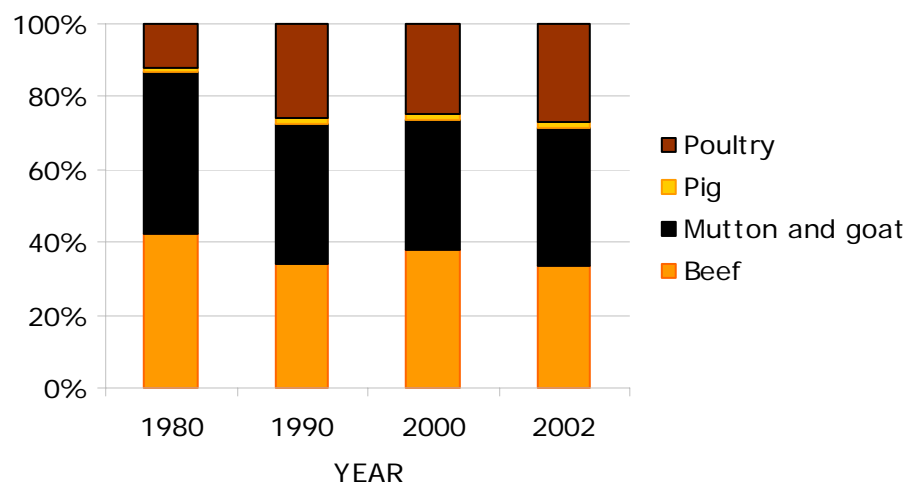
Trends in annual production of meat, milk and eggs

1,000 metric tonnes

Product	Year				Annual growth rate (%)	
	1980	1990	2000	2002	1980-1990	1990-2000
Meat, total	97.5	98.7	132.8	129.5	0.1	3.0
Beef	37.1	28.0	41.0	35.0	-2.8	3.9
Mutton and goat	38.7	31.2	39.3	40.1	-2.2	2.4
Pig	1.1	1.3	1.4	1.4	1.8	0.4
Poultry	10.4	21.4	27.1	28.2	7.5	2.4
Milk, total	242.6	243.1	306.1	315.4	0.0	2.3
Eggs, total	6.8	8.5	10.2	10.5	2.3	1.8

Source: FAO (2005a)

Composition of total meat production



Source: FAO (2005a)

Carcass weights and percentage slaughtered by species

Species/year	Carcass weight (kg/animal)				Percentage slaughtered/year			
	1980	1990	2000	2002	1980	1990	2000	2002
Cattle	100.7	109.8	130.2	134.6	11.0	14.9	14.2	11.5
Sheep	15.0	16.0	16.0	16.0	24.9	23.9	20.9	20.7
Goat	12.0	12.0	12.0	12.0	32.7	32.4	30.5	30.4
Pigs	45.0	45.0	45.0	45.0	80.6	79.9	79.5	78.7
Poultry	0.8	0.8	0.8	0.8	130.0	150.0	144.3	143.7

Source: FAO (2005a)

Milk yields and proportion of dairy animals

Species/year	Milk yield (kg/year)				Percentage milked			
	1980	1990	2000	2002	1980	1990	2000	2002
Cattle	200	400	400	400	14.3	20.5	20.3	20.4

Source: FAO (2005a)

Egg yields and proportion of laying birds

Species/year	Eggs (kg/year)				Percentage laying			
	1980	1990	2000	2002	1980	1990	2000	2002
Chicken	1.7	1.7	1.7	1.7	40.0	28.1	25.5	25.3

Source: FAO (2005a)

Estimated feed used for livestock production

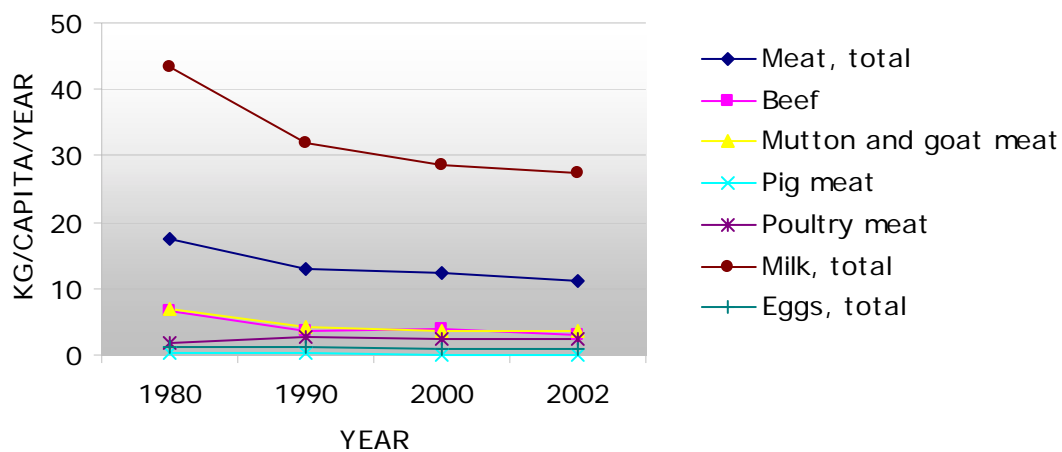
1,000 metric tonnes

Product	Year				Annual growth rate (%)	
	1980	1990	2000	2002	1980-1990	1990-2000
Maize						
Barley						
Sorghum	7.4	8.3	7.5	14.5	1.1	-1.1
Millet	69.2	88.6	110.2	125	2.5	2.2
Wheat						
Brans	162	245.8	282.6	349.8	4.3	1.4
Rice Paddy, equivalent	0	0	4.2	0		
Roots and Tuber, dry equivalent						
Pulses						
Oil crops	0	0	0	0		

Blanks represent no data

Source: FAO (2005a)

Trends in annual per capita production of meat, milk and eggs



Source: FAO (2005a)

4. CONSUMPTION OF MEAT, MILK AND EGGS

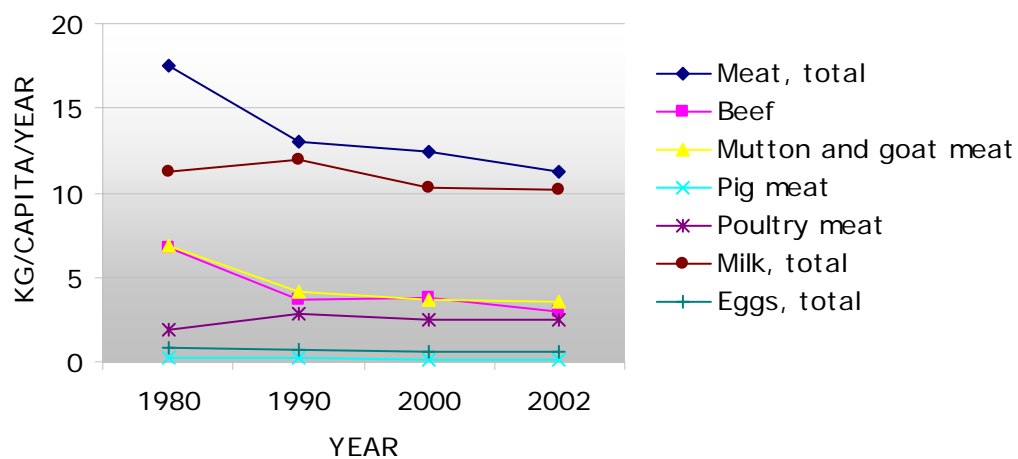
Trends in annual consumption of meat, milk and eggs

1,000 metric tonnes

Product	Year				Annual growth rate (%)	
	1980	1990	2000	2002	1980-1990	1990-2000
Meat, total	97.8	99.1	132.9	129.9	0.1	3.0
Beef	37.2	28.3	41.0	35.0	-2.7	3.8
Sheep and goat	38.7	31.2	39.3	40.1	-2.2	2.4
Pig	1.3	1.4	1.4	1.4	0.8	0.4
Poultry	10.4	21.4	27.2	28.4	7.5	2.4
Milk, total	62.3	90.9	111.2	118.1	3.8	2.0
Eggs, total	4.4	5.6	6.7	6.9	2.3	1.8

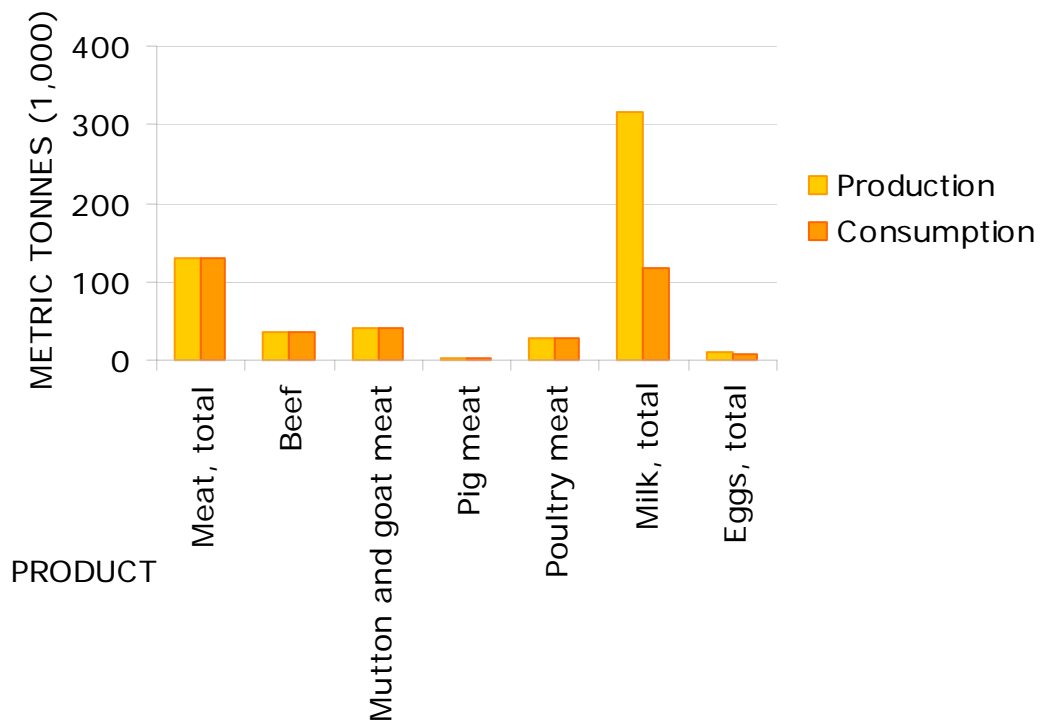
Source: FAO (2005a)

Trends in annual per capita consumption of meat, milk and eggs



Source: FAO (2005a)

Production versus consumption for meat, milk and eggs (2002)



Source: FAO (2005a)

5. TRADE IN LIVESTOCK AND LIVESTOCK PRODUCTS

Trade in agricultural and livestock¹ products

Values in million US\$

Product	Exports				Imports			
	1980	1990	2000	2002	1980	1990	2000	2002
Total	616.7	372.4	320.7	353.2	956.6	544.7	455.5	538.5
Agricultural	85.6	62.1	88.3	81.1	81.9	127.8	110.8	170.0
% agricultural	13.9	16.7	27.5	23.0	8.6	23.5	24.3	31.6
Livestock	43.2	39.1	49.3	39.8	6.4	15.4	9.2	12.6
% livestock	7.0	10.5	15.4	11.3	0.7	2.8	2.0	2.3

¹Total trade in goods and services expressed in current US\$. Source: World Bank (2002)
Agricultural trade refers to all agricultural products, while livestock trade refers to trade in livestock products and live animals. Source: FAO (2005b)

Export/import 'dependency' for livestock products

Product	Exports as percentage of production				Imports as percentage of consumption			
	1980	1990	2000	2002	1980	1990	2000	2002
Meat, total	0.01	0.01	0.05	0.03	0.32	0.39	0.07	0.10
Beef	0.01	0.04	0.15	0.07	0.44	1.11	0.08	0.00
Sheep and goat	0.00	0.00	0.01	0.00	0.00	0.00	0.00	0.00
Pig	0.00	0.00	0.11	0.00	7.15	0.98	1.50	0.79
Poultry	0.00	0.00	0.00	0.00	0.00	0.18	0.12	0.19
Milk, equivalent	0.00	0.00	0.39	0.36	14.53	24.77	27.72	40.78
Eggs, total	0.00	0.00	0.04	0.00	0.50	1.63	0.71	2.86

Source: FAO (2005a)

Product	Net exports as percentage of production				Net imports as percentage of consumption			
	1980	1990	2000	2002	1980	1990	2000	2002
Meat, total	0.00	0.00	0.00	0.00	0.31	0.38	0.02	0.08
Beef	0.00	0.00	0.07	0.07	0.43	1.08	0.00	0.00
Sheep and goat	0.00	0.00	0.01	0.01	0.00	0.00	0.00	0.00
Pig	0.00	0.00	0.00	0.00	7.15	0.98	1.40	0.79
Poultry	0.00	0.00	0.00	0.00	0.00	0.18	0.12	0.19
Milk, equivalent	0.00	0.00	0.00	0.00	14.53	24.77	26.65	39.82
Eggs, total	0.00	0.00	0.00	0.00	0.50	1.63	0.64	2.86

Source: FAO (2005a)

Trade in live animals

Species	1980			1990			2000			2002		
	Export	Import	Net trade	Export	Import	Net trade	Export	Import	Net trade	Export	Import	Net trade
Quantities (count)												
Cattle	175,000	13,000	162,000	80,000	20,000	60,000	34,110	738	33,372	93,519	196	93,323
Sheep and goats	250,000	0	250,000	207,638	15,000	192,638	289,561	35	289,526	923,700	465	923,235
Pigs	0	0	0	0	795	-795	155	0	155	379	226	153
Poultry (1,000)	0	0	0	0	60	-60	0	6	-6	0	1	-1
Value (1,000 US\$)												
Cattle	28,483	1,690	26,793	24,000	4,800	19,200	20,530	29	20,502	13,426	59	13,367
Sheep and goats	11,800	0	11,800	9,300	700	8,600	21,922	2	21,920	18,890	29	18,861
Pigs	0	0	0	0	360	-360	24	0	24	6	120	-114
Poultry (1,000)	0	0	0	0	20	-20	0	14	-14	0	1	-1
Total	40,283	1,690	38,593	33,300	5,880	27,420	42,477	45	42,432	32,322	209	32,113

Net trade: Exports less Imports

Blanks represent no data

Source: FAO (2005a)

Trade in livestock products

Product	1980			1990			2000			2002		
	Export	Import	Net trade	Export	Import	Net trade	Export	Import	Net trade	Export	Import	Net trade
Quantities (metric tonnes)												
Meat, total	5	311	-305	10	389	-379	71	94	-23	34	135	-101
Beef	5	165	-159	10	315	-305	60	33	28	25	1	24
Mutton and goat	0	0	0	0	0	0	5	0	5	2	0	2
Pig	0	90	-90	0	13	-13	2	21	-20	0	11	-11
Poultry	0	0	0	0	39	-39	0	33	-33	0	53	-53
Other	0	56	-56	0	22	-22	4	7	-11	7	70	-77
Milk, equivalent	0	9,056	-9,056	0	22,509	-22,509	1,193	30,821	-29,628	1,136	48,145	-47,009
Eggs, total	0	22	-22	0	91	-91	4	47	-43	0	196	-196
Hides and skins	651	0	651	512	0	512	706	4	702	468	4	464
Value (1,000 US\$)												
Meat, total	1	772	-771	20	820	-800	42	172	-129	19	535	-516
Beef	1	419	-418	20	645	-625	37	49	-12	10	1	9
Mutton and goat	0	0	0	0	0	0	3	0	3	2	0	2
Pig	0	273	-273	0	92	-92	1	63	-62	0	25	-25
Poultry	0	0	0	0	72	-72	0	53	-53	0	63	-63
Other	0	80	-80	0	11	-11	2	6	-8	7	446	-453
Milk, equivalent	0	3,904	-3,904	0	8,603	-8,603	189	8,889	-8,700	268	11,767	-11,499
Eggs, total	0	52	-52	0	77	-77	3	62	-59	0	108	-108
Hides and skins	2,882	0	2,882	2,355	0	2,355	723	1	721	654	15	639
Total	2,883	4,728	-1,845	2,375	9,500	-7,125	956	9,123	-8,167	941	12,425	-11,484

Net trade: Exports less Imports

Blanks represent no data

Source: FAO (2005a)

6. LIVESTOCK HEALTH

Total number of cases/outbreaks of selected diseases reported in all susceptible species

Disease	1997	1998	1999	2000	2001	2002	2003
African swine fever	-	-	-	-	-	-	
Avian Influenza ¹	(10/1995)	(10/1995)	(10/1995)	(10/1995)	(10/1995)	(10/1995)	
Bluetongue	-	-	-	-	-	-	
BSE ²					
CBPP ³	189/9	24/1	.../3	(1999)	(1999)	11/2	15/1
Classical swine fever	000	000	000	000	000	000	000
Foot and mouth disease	.../84	34/13	.../19	34/...	.../22	148/116	93/70
Lumpy skin disease	2/1	(1997)	.../13	.../20	.../9	8/2	112/30
Newcastle disease	.../2	37/5	.../8	.../78	.../...	30/1	37/1
Peste des petits ruminants	.../9	340/11	.../1	(1999)	.../3	20/3	.../146
Rift Valley fever	-	-	-	-	-	-	
Rinderpest	(1985)	(1985)	(1985)	(1985)	(1985)	(1985)	(1985)
Sheep and goat pox	.../19	183/77	.../18	457/59	.../6	1,502/217	532/100
Swine vesicular disease	-	-	-	-	-	-	
Vesicular stomatitis	000	000	000	000	000	000	

¹ Highly pathogenic avian influenza

² Bovine spongiform encephalopathy

³ Contagious bovine pleuropneumonia

no./no. number of cases/outbreaks, ... no information, - disease not reported, 000 disease never reported; (month/year) date of the last reported occurrence of the disease in previous years

Source: OIE (2004)

7. REFERENCES AND FURTHER READING

FAO (2001) Agro-ecological Distributions for Africa, Asia and North and Central America, Consultants' Report. Food and Agriculture Organisation, Rome.

FAO (2003) Cattle and small ruminant production systems in sub-Saharan Africa: a systematic review. Food and Agriculture Organisation, Rome.

FAO (2005a) FAOSTAT data. Food and Agriculture Organisation, Rome.
<http://faostat.external.fao.org/default.jsp> (accessed March, 2005).

FAO (2005b) Global Livestock Production and Health Atlas. Food and Agriculture Organisation, Rome. <http://www.fao.org/ag/aga/glipha/index.jsp> (accessed March, 2005).

LandScan (2002) Global Population Database. Oak Ridge National Laboratory, Oakridge. <http://www.ornl.gov/gist/>

OIE (2004) HANDISTATUS II. Office International des Epizooties, Paris.
<http://www.oie.int/hs2/> (accessed March, 2005).

UNDP (2004). The Human development Reports, United Nations Development Programme, New York. <http://hdr.undp.org/statistics/>

World Bank (2002) The 2002 World Bank development indicators CD-Rom. The World Bank, Washington DC.